

PARK & RECREATION MASTER PLAN



DRAFT # 2 (JUNE 2023)
ORIGINALLY PART OF THE HOBART 2040 PLAN

A HEALTHY CITY IN THE MAKING

Parks, recreation, and the urban forest are vital infrastructure that support Hobart’s health. Ensuring a healthy and engaging lifestyle for Hobart residents is inherent in all that the City does. It is important to increase opportunities for physical activity, combating obesity and other chronic health conditions through fitness. In addition to physical health, parks also enhance the quality of life and improve mental health by providing access to and connections with nature, particularly coming out of the Covid-19 pandemic. In terms of sustainability, scientific studies have made it clear that an environmental crisis is changing climate patterns around the world. This phenomenon could potentially limit access to the natural environment in Hobart. As we plan for the future, it is key to keep sustainability front and center and consider guiding principles and policies that minimize Hobart’s contribution to climate change.

WHY PLAN NOW?

Hobart’s system of parks and open spaces is incredibly diverse and, in many ways, complementary. However, similar to other communities, the park system is facing challenges environmentally and economically, and is unable to serve the current and future needs of Hobart residents. The natural environment goes beyond parks and a comprehensive approach must be taken to ensure adequate distribution of open space and resources as well as the preservation of the natural environment in Hobart. Some of the issues that comparable communities are facing include drought and flooding, increased deferred maintenance, decaying urban forest and tree canopy, a continued rise in obesity, and limited access to nature.

This plan establishes the City’s short- and long-term goals for the years to come. The outcome is designed to be flexible and responsive to the inevitable changes that will occur over the years. Board members and staff should look to revisit the action plan on an annual basis to evaluate proposed initiatives and priorities, and develop context sensitive implementation strategies to effectively complete their goals.

INDIANA DEPARTMENT OF NATURAL RESOURCES (DNR)

The Indiana Department of Natural Resources manages the resident wildlife resources of Indiana and administers state parks, state fish and wildlife areas, and state nature preserves. Guiding local communities to effectively plan for the future of parks, recreation, and natural area, as well as continue to serve current and future residents, Indiana DNR sets forth a set of guidelines for developing master plans. As identified by the organization, developing a master plan every five years, or ensuring current plans stay current could allow the Hobart Park and Recreation Department **“the Department”** to submit for grant programs administered by the Division of State Parks, Community Grants and Trails. The Hobart Park & Recreation Master Plan was developed as part of the City-wide comprehensive planning effort, and is meant to be encompassing of all critical planning components that define the Department’s 5-year plan.

PLANNING FOR YOUR TOMORROW

Hobart's population is changing over time. Projections below indicate that the Alpha Population (born 2017 or later) are projected to double by the year 2027. The majority of other cohorts are holding stable, with the exception of a drop in the Greatest Population (born 1945 or earlier). Overall, Hobart is also becoming more diverse. In 2022 the youngest population based on ethnicity is Hispanic with a median age of 30, followed by African American with 36.6, Asian with 40.6 and Caucasian/White with 45.6.

Planning for and accommodating the changes in population would position the Department to stay relevant and responsive to the projected makeup of Hobart residents.



Brickie Bowl Concert

“ We should create more events that are truly ours ”

- STAKEHOLDER COMMENT



Arbor Lane Park (Mini Park)



TIMELINE HISTORY

Below is a timeline that outlines the various ordinances that led to the creation of the Hobart Park Board and Hobart Park Department, starting in 1923.

1923
APR.

#30
ORDINANCE

Creation of a Board of Trustees to control and manage the public parks of the City of Hobart,

Allows for the acquisition of real property for playgrounds and recreation centers. This ordinance also provided for a tax levy to be deposited in a recreation fund.

#620
ORDINANCE

1960
AUG.

1963
APR.

#687
ORDINANCE

Empowered the Mayor to appoint a four member park board to administer all funds in the recreation fund and created the Parks and Recreation Department.

Revised the laws under Indiana Code 36-10-3. Dictated that the Park Board be appointed by the Mayor. The Superintendent of Parks and Recreation Department was established.

#704
ORDINANCE

1963
AUG.

1996
FEB.

#687
ORDINANCE

Creation of a Board of Park Commissioners under Indiana Code 36-10-4 thereby creating a **Department of Public Parks.**

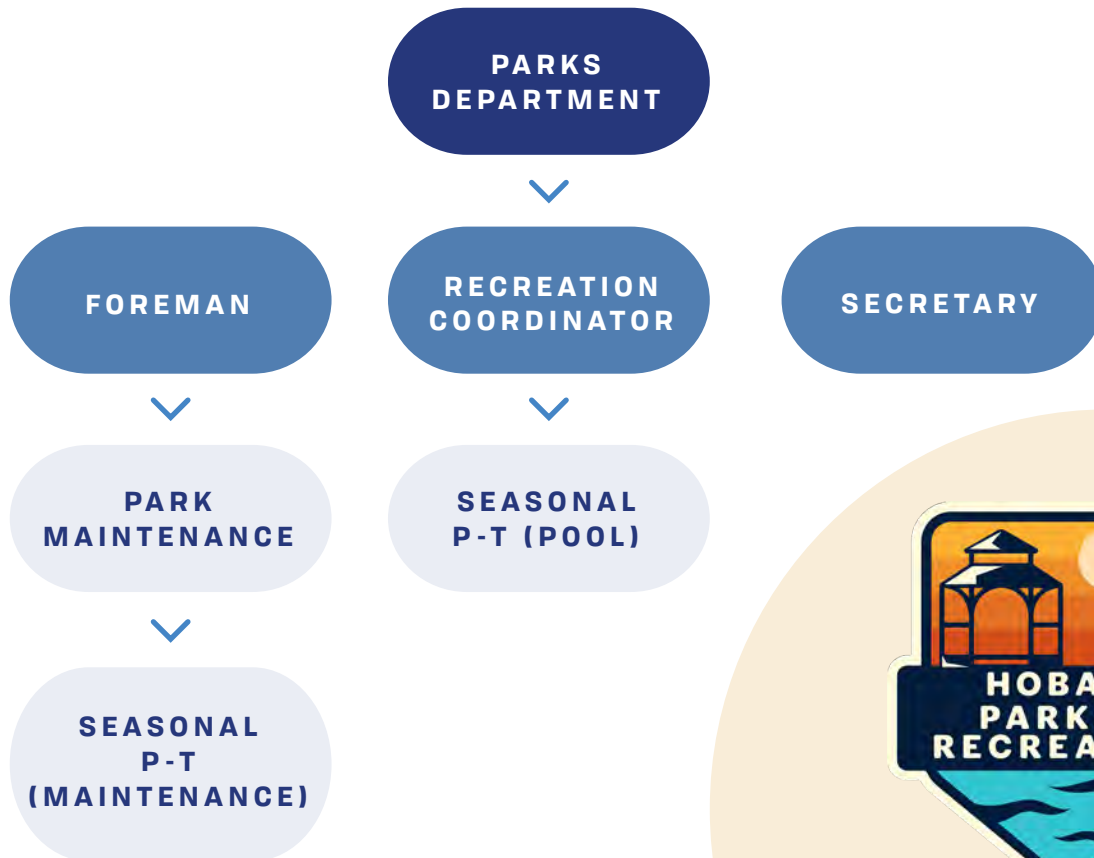
HOBART PARK BOARD

The Hobart Park Board, consisted of four commissioners and two officio members, is responsible for approving decisions regarding all park events including the Hobart Pool, rentals of park properties, and park programs. The list of Park Board members and City representatives includes:

- » **ANGELA GRABCZAK**, Commissioner
- » **MARK KARA**, Commissioner
- » **MARIA GALKA**, Commissioner
- » **JOSEPH SUCH**, Commissioner
- » **JOSH HUDDLESTUN**, Council Representative
- » **SANDY HILLAN**, School Board Representative

DEPARTMENT STAFF

The Hobart Parks Department consists of twenty full time employees, including recreation programming staff. The Department includes one Recreation Coordinator, one foreman, two maintenance staff members, and one secretary. The chart below illustrates the Parks Department staffing structure.



PARK SCORECARDS

Park scorecards is intended to help guide capital improvement plans, master plans, and maintenance standards. This chapter of the Park, Recreation, and natural assessment chapter can provide the City of Hobart a better understanding of how well each park site is performing and what improvements each amenity can benefit from.

In summary, the park scorecards will guide the City of Hobart to:

- » Understand the present state of Hobart’s public open spaces and facilities.
- » Determine priorities for improvements and provide direction for allocation of funds, staff, and other resources,
- » Communicate priorities internally among employees and externally to governing boards, citizen committees, and the public.
- » Measure the impact of open space infrastructure and facility investments, as well as open space and facility maintenance efforts.
- » Help Hobart residents understand how their local parks and facilities performing in comparison to other parks in the District.



are

GRADING LEGEND	
A = 4.0	C = 2.0 - 2.29
A - = 3.8 - 3.99	C - = 1.8 - 1.99
B + = 3.3 - 3.79	D + = 1.3 - 1.79
B = 3.0 - 3.29	D = 1.0 - 1.29
B - = 2.8 - 2.99	D - < 1.0
C + = 2.3 - 2.79	



Lakefront Park

SAMPLE PARK SCORECARD

Park Details

HILLMAN HEIGHTS PARK

Location: 2500 N. Hansen Blvd.
Size: 3.41 acres

Features and Amenities

Basketball Court
 Picnic Shelter
 Playground / Swings

NEIGHBORHOOD PARK

Park Category

B

Score = 3/4

Score

Background & Description

Site Description

Located in the Hillman Heights subdivision, Hillman Heights Park offers recreational amenities including two play structures, a swing set, a basketball court, and a picnic shelter with picnic tables. The playground to the east is older and has been recently renovated with painted metal posts. The picnic shelter overall is in poor condition and requires maintenance. Adjacent, yet spatially separated from the old play structure, is a swing set that is showing wear and is rusting. The playground to the west is brand new and features new safety features such as wood chip surfacing and defined edging. A basketball court separates the two play structures and is in fair condition. Features of the park are not well connected and do not cohesively integrate within the context as a whole are not well connected and are positioned against one another in an uncoordinated manner. Overall, Hillman Heights Park has a welcoming feel with mature trees and could potentially promote additional active and passive recreational features and amenities.

Hillman Heights park received a score of 3/4.

Recommendations

Recommendations

- » Repair/replace dated and rusted play equipment, including the swing set
- » Consider multi-generational passive recreation features
- » Consider basketball court resurfacing and re-striping
- » Consider adding seating pockets, including benches
- » Consider better aligning future site amenities
- » Provide additional wayfinding and signage



Picnic Shelter
Fair condition



New Play Equipment
Excellent condition



Photos

Aerial

Scorecards for all parks can be found in the appendix.

OVERALL PARK IMPROVEMENTS

Increase the number of benches and provide additional shade in park sites and around playgrounds.

Reduce turf area and add complementary amenities, where feasible, to reduce overall amenity deficiency and increase the variety of recreational offerings in Mini Parks and Neighborhood Parks.

Consider better integrating playgrounds within the parks, including locating equipment in better relationships, providing fewer barriers surrounding the play areas, using topography to create interest and play challenges.

Consider color and concept themes in Neighborhood Parks

Consider more comprehensive open space designs that integrate a variety of landscape planting, pathways and circulation, gateways, seating and gathering spaces, and buffers to adjacent uses.

Consider signage and wayfinding as guidance / educational information where feasible.

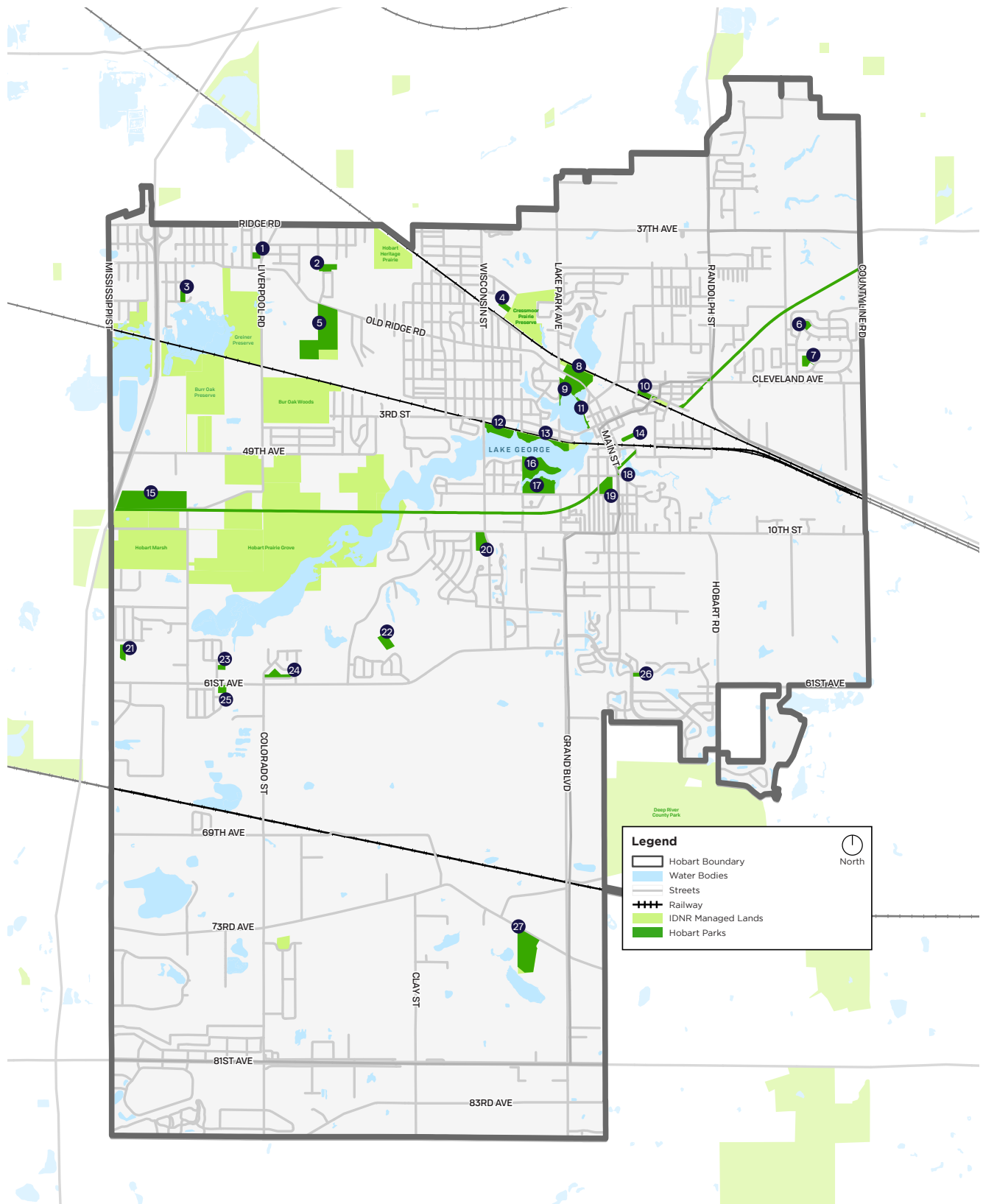


Our natural resources are definitely what makes us stand out. We should absolutely focus on making those more accessible and think about experiential programming.

- STAKEHOLDER COMMENT

Theme 4 : Park & Recreation

Fig 20: Hobart Retail Clusters: Healthcare, Food Businesses, & Retail



COMMUNITY OPEN SPACE

Public parks and open space are provided by several agencies in the City of Hobart, including the School City of Hobart. While all agencies provide open space and recreation opportunities, they do so in varying capacities. The City of Hobart has a total of 27 parks and open space sites that equal a total of 198 acres. Additional undeveloped natural areas can be found within the City limits equaling a total of 1,092 acres. The City of Hobart has limited control over the natural areas, however community residents have access to trails and other amenities within those sites. Natural Areas are the largest park category in the City at 86% of the total open space acreage. Excluding Natural Areas, out of the 198 acres of managed park and open spaces, 95% or 189 acres are considered “Active Recreation Areas” which includes Neighborhood Parks and Community Parks. A breakdown of park acreage by classification is provided in the appendix.

HOBART’S PARK SYSTEM

1. Ted Hansen Park **(NP)**
2. Hillman Heights Park **(NP)**
3. Englehart Park **(MP)**
4. Emily Silich Park **(MP)**
5. Hillman Park **(CP)**
6. Arbor Lane Park **(MP)**
7. McAfee Park **(NP)**
8. Soccer Rugby Field **(NP)**
9. Festival Park **(CP)**
10. Pennsy Park **(NP)**
11. Lakefront Park **(NP)**
12. Pleak Park **(NP)**
13. Jerry Pavese Park **(NP)**
14. Brickie Bowl **(NP)**
15. Robinson Lake Park **(CP)**
16. Fred Rose Lakeshore **(CP)**
17. Fred Rose 8th St. Park **(CP)**
18. Doughboy Monument **(MP)**
19. Hobart City Ball Park **(NP)**
20. Hobart Community Pool **(NP)**
21. Glenwood Park **(NP)**
22. Merrillville Heights Park **(NP)**
23. Brookview Park **(NP)**
24. Amber Creek Park **(MP)**
25. Deep River Parkway **(NP)**
26. Barrington Ridge Park **(MP)**
27. Veteran’s Memorial Park **(CP)**

(MP) = Mini Park

(NP) = Neighborhood Park

(CP) = Community Park

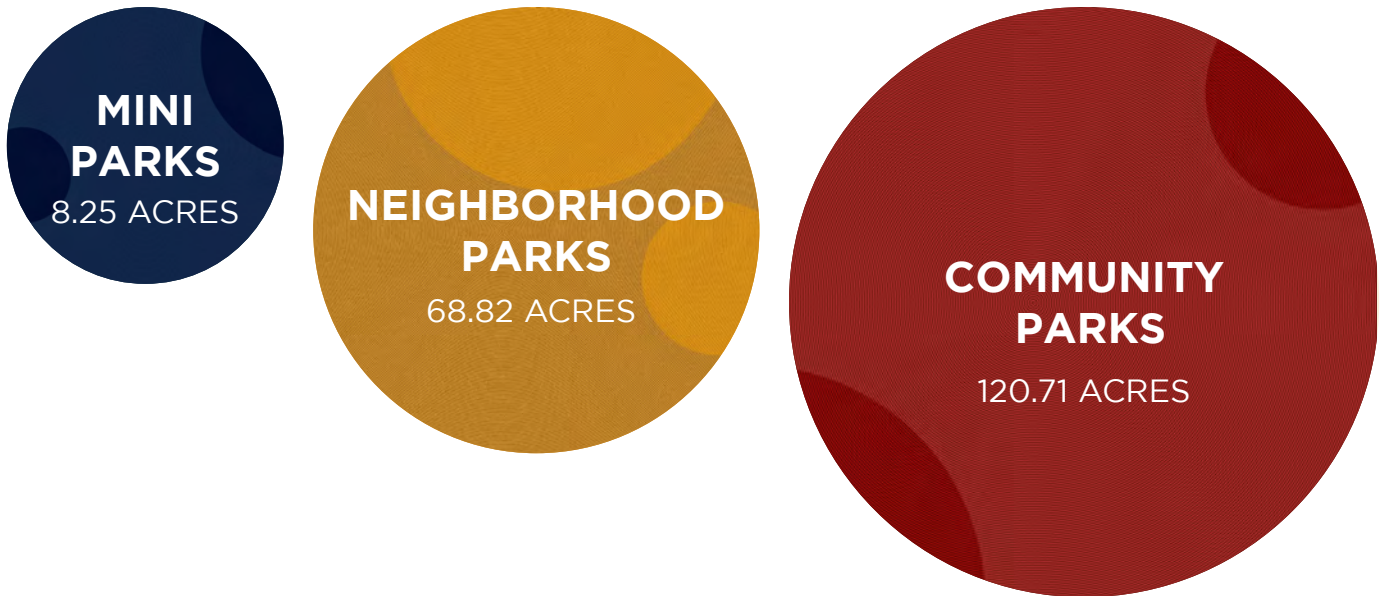


Table 10: Park Classification

Classification	General Description	Service Area	Size Criteria
Mini Parks	Mini Parks meet the need for a walkable, drop-in recreation experience. Appropriate elements in these parks include playgrounds, picnic areas, and seating. These parks usually do not include parking. Used to address limited, isolated, or unique recreational needs.	Less than 0.25-mile radius distance.	0 to 1 acres in size is typical
Neighborhood Parks	Neighborhood Parks remain the basic unit of the park system and are generally designed for informal active and passive recreation and community gathering spaces. Elements in these parks often include playgrounds, picnic areas, sports fields, and trail systems. Neighborhood Parks serve as the recreational and social focus of the neighborhood.	0.5 to 1.0-mile radius distance.	1 to 5 acres in size is typical.
Community Parks	Community Parks focus on meeting regional and community-wide recreation needs. These parks preserve unique landscapes and often serve the community as gathering places. Community Parks also host athletic teams and affiliate programs. Elements in these parks include playgrounds, pavilions, trails and path systems, multiple sport courts, and fields.	Usually serves two or more neighborhoods and 0.5 to 3-mile radius distance.	As needed to accommodate desired uses. Usually a minimum of 10 acres.

Source: NRPA's Park, Recreation, Open Space & Greenway Guidelines

LEVEL OF SERVICE ANALYSIS

The Level of Service (LOS) analysis evaluates how well the City's parks and outdoor amenities compare to local, regional, and industry benchmarks and attempts to gauge how well the offerings serve the Hobart community.

Level of Service standards and recommendations provide City staff and officials with the information they need to respond to growing communities and their ever-changing needs. Its basic utility is evaluating whether community assets meet the legal and economic requirement of equity. Benchmarks for park and recreation agencies and departments were first developed in the 1980s by the National Parks and Recreation Association (NRPA) to measure the total acreage needs of communities. According to the NRPA, a Level of Service benchmark should be practical and achievable; equitable; and context-sensitive.

As much as this analysis is integral in estimating how well residents of the City are being served, it is only one of many tools that can help in determining future goals and needs.

ACREAGE LEVEL OF SERVICE

NRPA Recommended - Acreage Level of Service analyses aim to measure the minimum acres of land required to provide recreational opportunities and the amenities required to support them. Acreage of park land per 1,000 residents remains the most common technique of expressing equal opportunity, even though conditions and needs vary greatly between areas. [2022 NRPA Agency Performance Review](#) recommends that the typical park and recreation agency (populations 20,000 to 49,999) offers 10.4 acres of parkland for every 1,000 residents in the jurisdiction.

With a population of 29,219, the City of Hobart is recommended to have 303 acres of Active Recreation areas. With 197.78 acres of Mini Parks, Neighborhood Parks, and Community Parks combined, the City is deficient by 105.2 acres, when compared to the 10.4 acres / 1000 population benchmark.

While Natural Areas in Hobart exceed 1,000 acres and would position the City well beyond the NRPA benchmark, this amount of undeveloped land was not included in this analysis, given that these sites are not owned or managed by Hobart.

MINI PARK ACREAGE

The City of Hobart is deficient in Mini Parks, offering less than half the recommended acreage at close to 1 acre / 1000 population. The City is deficient in almost 18 acres, and this deficiency contributes to almost 20% of the total shortage in active recreation open space.

NEIGHBORHOOD PARK ACREAGE

The City of Hobart has a surplus in Neighborhood Parks, offering close to 10 acres more than the recommended acreage at 2 acres / 1000 population.

COMMUNITY PARK ACREAGE

Hobart is most deficient in Community Parks, with a deficiency of over 95 acres according to the recommended acreage at 7.5 acres / 1000 population. This deficiency contributes to approximately 80% of the total shortage in active recreation open space.

Table 11: Acreage Level of Service Analysis NRPA

Classification	Hobart's Acreage	NRPA Recommended Acreage (Hobart population)	NRPA Recommended Acreage (acres/1000 population)	Acreage Deficiency or Surplus (acres)
Mini Parks	8.25	26	0.9	-17.75
Neighborhood Parks	68.82	58.4	2.0	10.42
Community Parks	120.71	219	7.5	-98.29
Total Acreage	197.78	303.4	10.4	-105.62

SCORP Recommended - While NRPA's recommended acreage level of service indicates the need for 10.4 acres per 1000 residents, the SCORP Indiana benchmark almost doubles that benchmark to 20 acres. According to the Indiana benchmark, Hobart is more than 350 acres deficient in overall park acreage.

Table 12: Acreage Level of Service Analysis SCORP

Classification	Hobart's Acreage	SCORP IN Recommended Acreage (Hobart population)	SCORP IN Recommended Acreage (acres/1000 population)	Acreage Deficiency or Surplus (acres)
Total Acreage	197.78	584	20.0	-386.22

McAfee Park Sign (Neighborhood Park)



Hobart City Ball Park (Neighborhood Park)



HOBERT PARKS

Park Acreage

When asked about outdoor community spaces, residents indicated that there is a need for additional large community parks, natural areas, and boating and fishing areas, as well as a nature center. While some residents expressed a need for outdoor sports and recreation facilities, the majority were more interested in increased natural green spaces. Many residents want to build upon Hobart's natural assets, especially Lake George and Deep River, by adding boat launches, water sports rentals, and multi-use trails. Participants also mentioned a desire for spaces dedicated to family gatherings, such as pavilions, gazebos, picnic areas, and splash pads. Despite some reservations around the maintenance and safety of a dog park, many community members would like to see at least one built within Hobart. In order to improve Hobart's parks and open spaces, residents would like to see more public restrooms in parks, better-maintained play areas, pocket parks within neighborhoods, and more public amenities.

Some of the best ideas for the future of the parks in Hobart came from community members themselves. When Hobart residents were asked to share their big ideas for Hobart's parks, they mentioned:

We have a need for a more livable city that has more parks and natural areas scattered all over Hobart.

We need large community parks like Valpo or Portage.

Top three parks include:

Hobart City Ball Park



Lakefront Park



Festival Park



**LARGE
COMMUNITY
PARKS**

60%

50%

**Satisfaction
WITH
Parks**

PARK DISTRIBUTION LEVEL OF SERVICE

Distribution Level of Service evaluates the equitability of offerings. Parks are categorized by NRPA classification standards which are based on size, function, and use of sites. The City of Hobart has Mini Parks, Neighborhood Parks, Community Parks, and Natural Areas. For this assessment, only Mini, Neighborhood, and Community Parks are used to evaluate distribution Level of Service, as natural areas are not owned or managed by the City of Hobart. The individual park classifications determine the service area for each park. Service areas for the park sites evaluated are as follows:

- » Mini Parks: 0.25 mile, or a 5-10-minute walk
- » Neighborhood Parks: 0.5 mile, or a 10-15-minute walk
- » Community Parks: 1.0 mile

The end result of this analysis will focus on how many people are served by certain Neighborhood or Community Parks. This may reveal that some of the planning areas are underserved or that the City is serving its residents and should shift its efforts towards maintaining and updating existing sites.

Planning Areas

To accurately evaluate the Level of Service for the walk-to destinations, or Mini and Neighborhood Parks, the City is divided into planning areas, or smaller “neighborhood-like” clusters, that are distinguished by barriers such as roads, railroads, stream corridors, water bodies, or other features that obstruct walkability. Service areas for Mini and Neighborhood Parks are clipped to these planning area boundaries. Community Park service areas do not take planning area boundaries into account as they are drive-to destinations. The Level of Service for each park classification is identified by the total number or percentage of residents that fall within the service areas for each park classification.

In Hobart, major barriers include the railroad tracks, Lake George, Interstate 65, Highway 130, and 61st Avenue, among others. These planning barriers resulted in 13 Planning Areas in the City of Hobart, which are outlined on the map to the right. Planning Area (I) has the largest population at 6,588 residents while Planning Areas (E) and (J) have the smallest populations at 0 and 292 residents, respectively. In general, the Planning Areas on the north and east have the highest population densities. Demographics for each Planning Area can be found in the chart to the right.

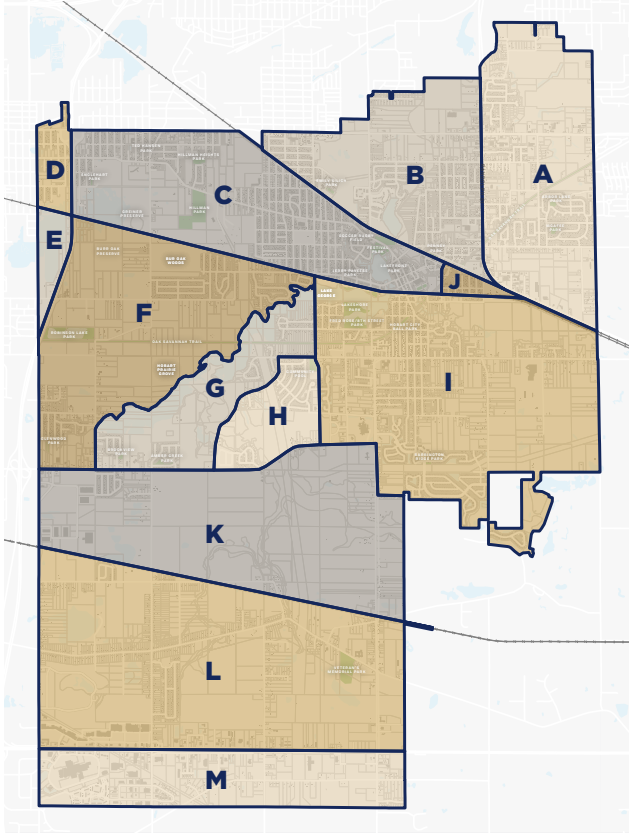
Table 13: Planning Area Populations

PLANNING AREA	POPULATION
Planning Area A	3,127
Planning Area B	4,568
Planning Area C	6,100
Planning Area D	525
Planning Area E	0
Planning Area F	2,594
Planning Area G	1,192
Planning Area H	1,107
Planning Area I	6,588
Planning Area J	292
Planning Area K	1,602
Planning Area L	1,332
Planning Area M	192
Total Population	29,219

Service Areas

To analyze the geographic distribution of the parks and open spaces in the City, service areas were created in the form of discs. These areas are illustrated with a pink disc on the Level of Service maps. The size of the service area is dependent on the park classification and ranges from a quarter-mile to one mile. Based on the overall distribution analysis, the Planning Areas with the lowest level of service, or highest need, are Planning Areas (A), (D), (I), (K), (L), and (M). These areas, and particularly (A) and (I) have the largest number of residents without access to park assets.

Fig 21: Planning Areas in Hobart



Park Distribution

Hobart residents expressed the need to increase access to park types of all categories to ensure both active and passive recreation opportunities are offered for as many residents as possible.

“ **Ted Hansen and Englehart Parks are in the poorest sections of Hobart and those need to be better maintained.** ”

“ **Increase access. Many parts of Hobart feel fragmented and there is a need to connect the parks and paths, especially to downtown.** ”

“ **More pocket parks and large scale parks.** ”

Penny Park Bike Trail



MINI PARKS DISTRIBUTION LOS

The Mini Park service area map shows a 0.25-mile service area radius around the existing Mini Parks. Community Parks and Neighborhood Parks can serve the function of a Mini Park for residents living within a 0.25-mile radius. The 0.25-mile radius service areas generated by Community Parks and Neighborhood Parks are illustrated in light blue on the map in Fig 22. Based on NRPA standards, Mini Parks are walk-to destinations, and for that reason, their service areas are clipped to the major planning areas in which they are located.

The Mini Park Distribution Level of Service Analysis map is illustrated in Fig 22. Planning Area (H) has the largest number of residents served 562 (51% of the Planning Area population) by Mini Parks. Planning Areas (A), (G), (H), and (I) have at least 30% or more of residents served by Mini Parks. Planning Areas (B), (C), (D), (F), (J), (K), (L) and (M) have the least number of residents served, with Areas (D), (J), (L), and (M) completely unserved by Mini Parks. Overall, all Planning Areas are underserved with large gaps of more than 3,000 unserved residents in certain areas.

Overall, 23.7% of Hobart’s residents live within a 0.25-mile walking distance to a park. This percentage of the population is lower than the 34.2% average identified by the planning team.

Table 14: Population Served by Planning Area (Mini Park)

PLANNING AREA	POPULATION	POPULATION SERVED
Planning Area A	3,127	1,055 (34%)
Planning Area B	4,568	1,175 (26%)
Planning Area C	6,100	1,284 (21%)
Planning Area D	525	0 (0%)
Planning Area E	0	0 (0%)
Planning Area F	2,594	508 (20%)
Planning Area G	1,192	378 (32%)
Planning Area H	1,107	562 (51%)
Planning Area I	6,588	1,948 (30%)
Planning Area J	292	0 (0%)
Planning Area K	1,602	26 (2%)
Planning Area L	1,332	0 (0%)
Planning Area M	192	0 (0%)
Total Population	29,219	6,936 (23.7%)

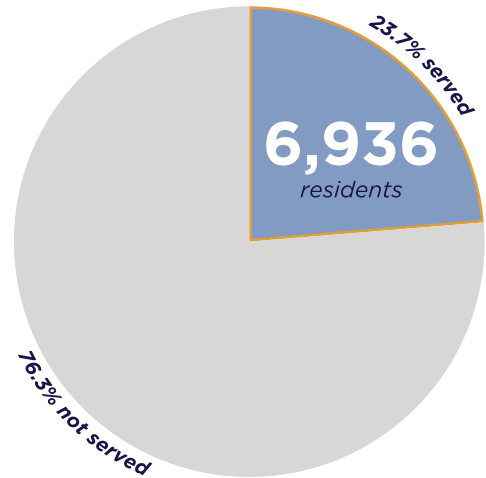
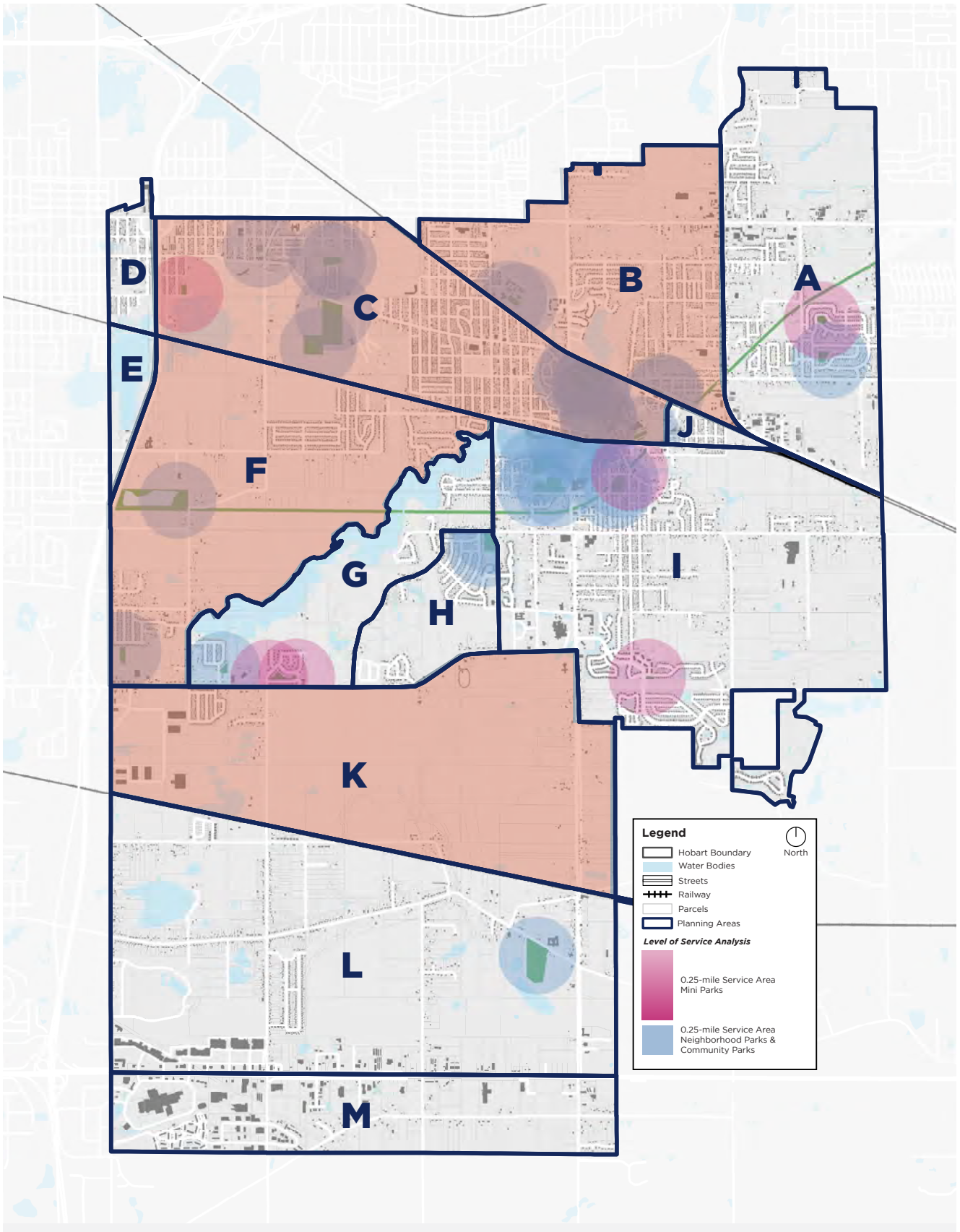


Fig 22: Mini Park Distribution Level of Service Map



NEIGHBORHOOD PARKS DISTRIBUTION LOS

The Neighborhood Park service area map shows a 0.5-mile service area radius around the existing Neighborhood Parks. Community Parks can serve the function of a Neighborhood Park for residents living within a 0.5-mile radius. The 0.5-mile radius service areas generated by Community Parks are illustrated in light blue on the map in Fig 23. Based on NRPA standards, Neighborhood Parks are walk-to destinations, and for that reason, their service areas are clipped to the major planning areas in which they are located.

The Neighborhood Park Distribution Level of Service Analysis map is illustrated in Fig 23. Planning Area (C) has the largest number of residents served at 3,248 (53% of the Planning Area population) by Neighborhood Parks. Planning Areas (A), (B), (C), (G), and (H) have at least 50% or more of residents served by Neighborhood Parks. Planning Areas (D), (F), (I), (K), (L), and (M) have the least number of residents served, with Areas (D), (J), (L), and (M) completely unserved by Neighborhood Parks. Overall, Planning Areas with larger percentages of population are fairly served by Neighborhood Parks, with the exception of Planning Area (I), which is the largest of all areas.

Overall, 43.3% of Hobart’s residents live within a 0.5-mile walking distance to a park. This percentage of the population is significantly lower than the 61.3% average identified by the planning team.

Table 15: Population Served by Planning Area (Neighborhood Park)

PLANNING AREA	POPULATION	POPULATION SERVED
Planning Area A	3,127	1,894(61%)
Planning Area B	4,568	2,637 (58%)
Planning Area C	6,100	3,248 (53%)
Planning Area D	525	0 (0%)
Planning Area E	0	0 (0%)
Planning Area F	2,594	705 (27%)
Planning Area G	1,192	608 (51%)
Planning Area H	1,107	784 (71%)
Planning Area I	6,588	2,478 (38%)
Planning Area J	292	0 (0%)
Planning Area K	1,602	307 (18%)
Planning Area L	1,332	0 (0%)
Planning Area M	192	0 (0%)
Total Population	29,219	12,661 (43.3%)

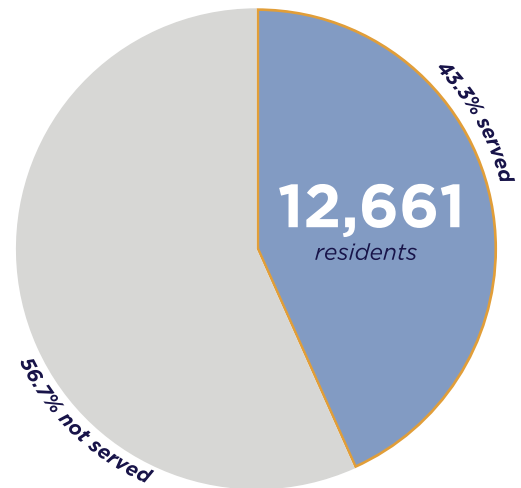
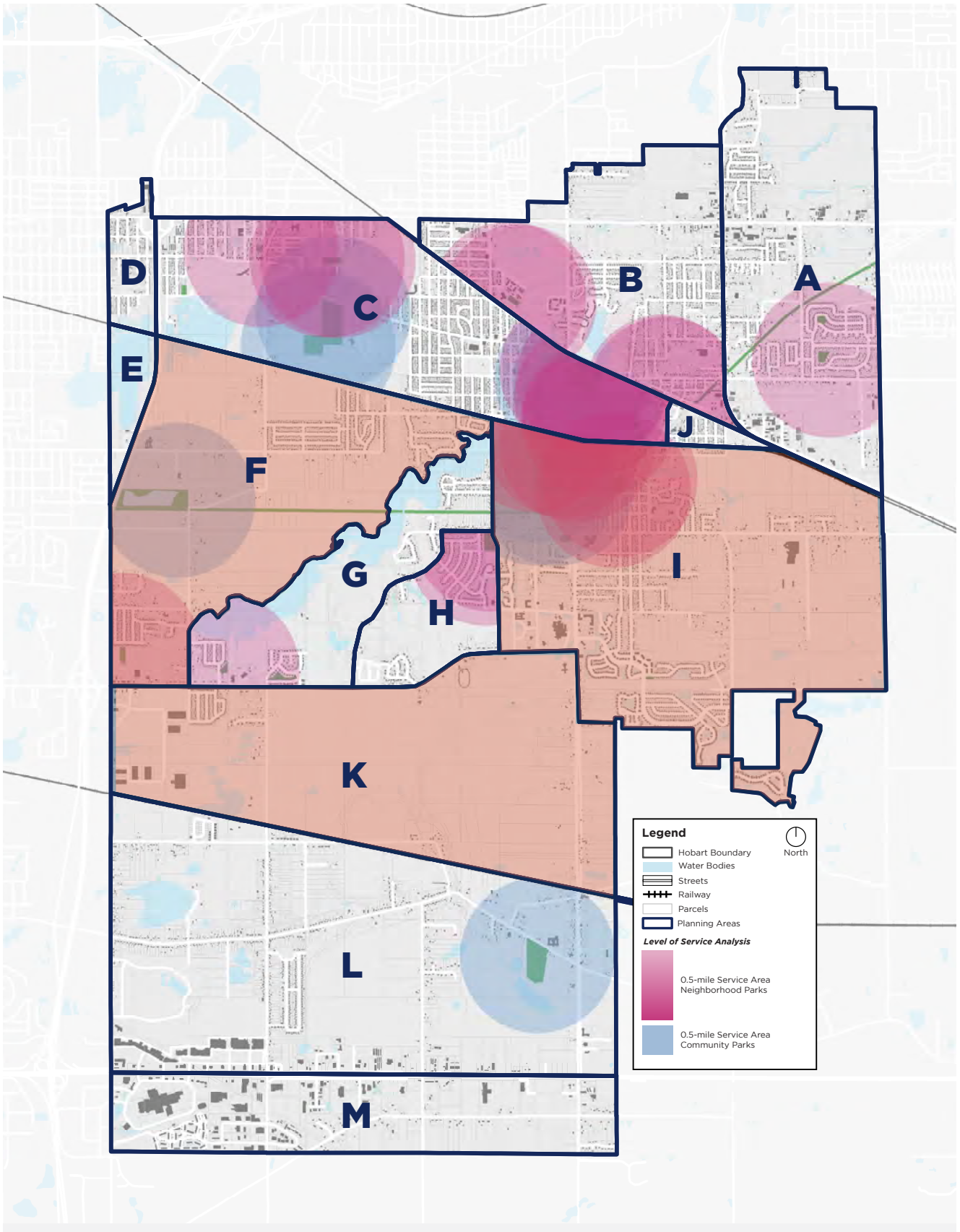


Fig 23: Neighborhood Park Distribution Level of Service Map



COMMUNITY PARKS DISTRIBUTION LOS

The Community Park service area map shows a 1.0-mile service area radius around the existing Community Parks. Based on NRPA standards, Community Parks are typically drive-to destinations, and for that reason, their service areas are not clipped to the major planning areas in which they are located.

The Community Park Distribution Level of Service Analysis map is illustrated in Fig 24. Planning areas (C) has the largest number of residents served at 5,804 (94% and of the Planning Area population) by Community Parks. Aside from Planning Area (C), Planning Areas (B), (F), and (J) have the highest percentage (80% or more) of residents served by Community Parks in Hobart. Planning Areas (A), (D), (G), and (K) have the least number of residents served, with Areas (A) and (D) completely unserved by Community Parks. Overall, Planning Areas with larger percentages of population are fairly served by Neighborhood Parks, with the exception of Planning Area (A).

Overall, 62% of Hobart’s residents live within a 1.0-mile driving distance to a park. This percentage of the population is lower than the 75.5% average identified by the planning team.

Table 16: Population Served by Planning Area (Community Park)

PLANNING AREA	POPULATION	POPULATION SERVED
Planning Area A	3,127	0 (0%)
Planning Area B	4,568	4,005 (88%)
Planning Area C	6,100	5,804 (95%)
Planning Area D	525	0 (0%)
Planning Area E	0	0 (0%)
Planning Area F	2,594	2,568 (99%)
Planning Area G	1,192	292 (24%)
Planning Area H	1,107	784 (71%)
Planning Area I	6,588	3,997 (61%)
Planning Area J	292	292 (100%)
Planning Area K	1,602	36 (2%)
Planning Area L	1,332	317 (24%)
Planning Area M	192	30 (16%)
Total Population	29,219	18,125 (62%)

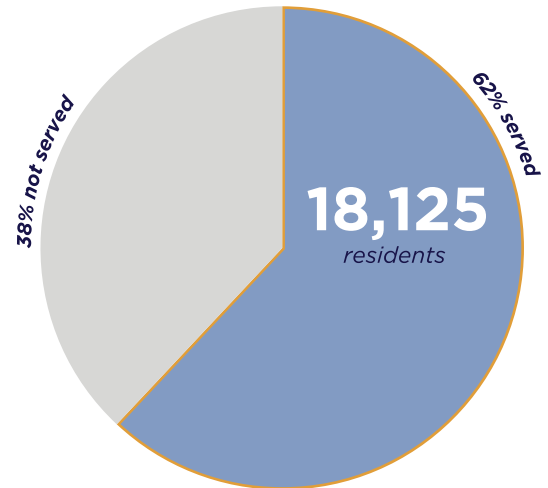
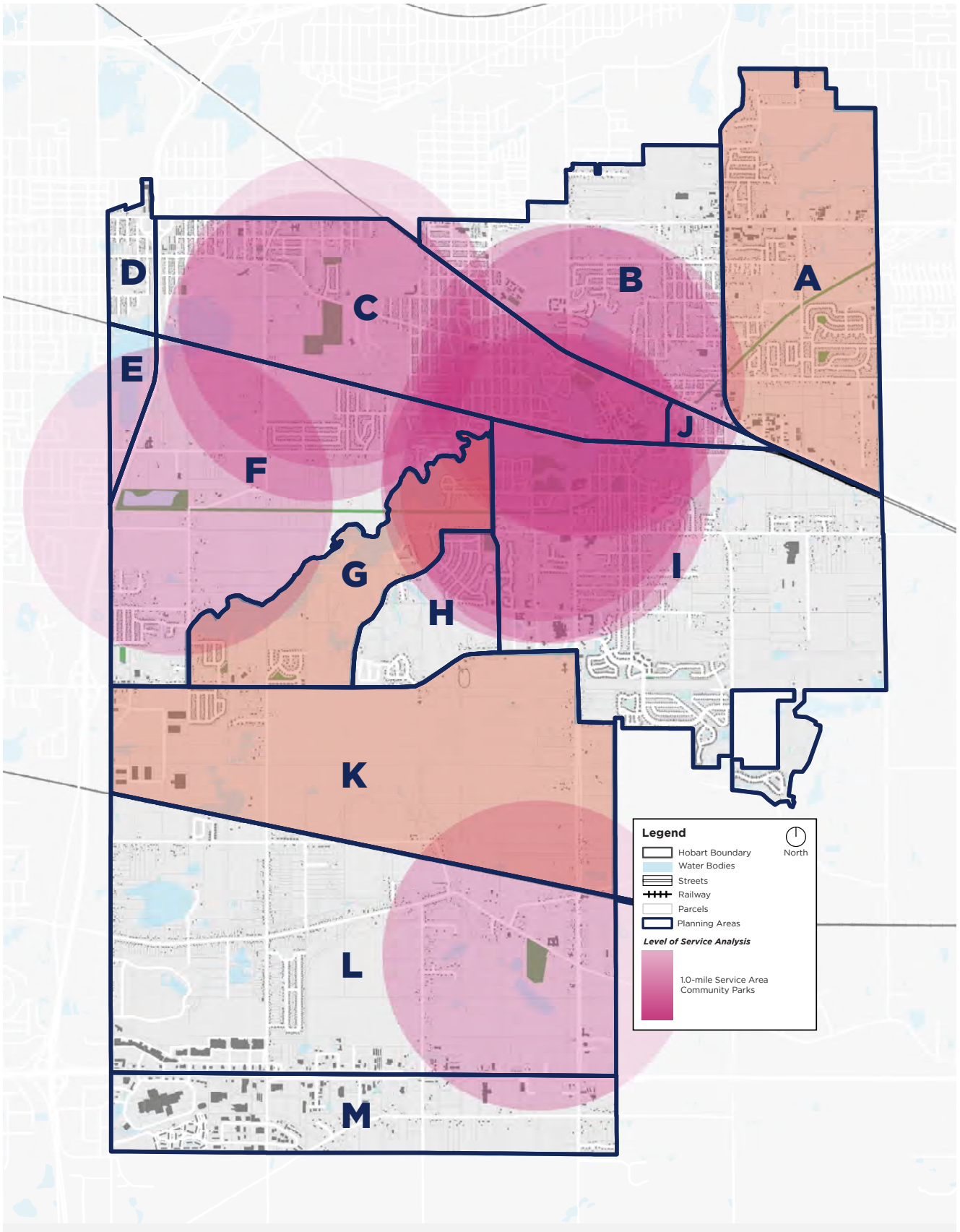


Fig 24: Community Park Distribution Level of Service Map



OVERALL PARKS DISTRIBUTION LOS

The Overall Park service area map shows a 0.25-mile, 0.5-mile, and a 1.0-mile service area radius around the existing Mini Parks, Neighborhood Parks, and Community Parks, respectively. Mini Parks and Neighborhood Parks service areas are clipped to the major planning areas, whereas Community Parks are not clipped.

The Overall Park Distribution Level of Service Analysis map is illustrated in Fig 25. Residents living in all Planning Areas, with the exception of areas (D), (K), (L), and (M), are at least 60% served. Planning Area (B) has the highest number of residents served (6,053) and the highest intensity of overlaying service areas (dark pink), followed by Planning Areas (I), (B), and (F). Planning Area (I) stands out in this analysis as it encompasses Downtown Hobart and only serves 66% of residents within that zone, with all park categories taken into consideration.

Overall, 73% of Hobart’s residents have access to a Mini, Neighborhood, or Community Park within zero to one mile of where they live. This percentage of the population is lower than the 84% average identified by the planning team.

Table 17: Population Served by Planning Area (Overall Park)

PLANNING AREA	POPULATION	POPULATION SERVED
Planning Area A	3,127	1,894 (61%)
Planning Area B	4,568	4,083 (89%)
Planning Area C	6,100	6,053 (100%)
Planning Area D	525	0 (0%)
Planning Area E	0	0 (0%)
Planning Area F	2,594	2,594 (100%)
Planning Area G	1,192	900 (76%)
Planning Area H	1,107	784 (71%)
Planning Area I	6,588	4,351 (66%)
Planning Area J	292	292 (100%)
Planning Area K	1,602	36 (2%)
Planning Area L	1,332	317 (24%)
Planning Area M	192	30 (16%)
Total Population	29,219	21,334 (73%)

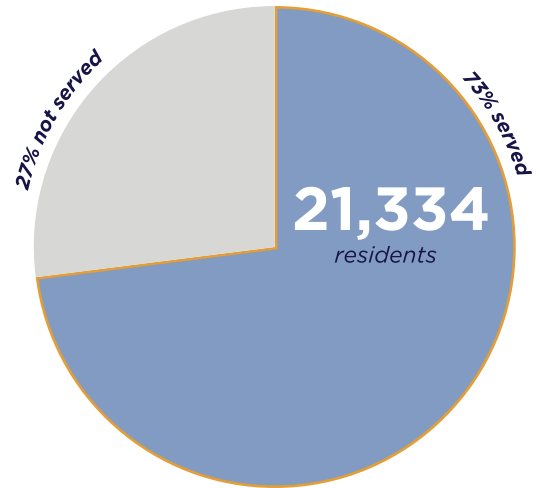
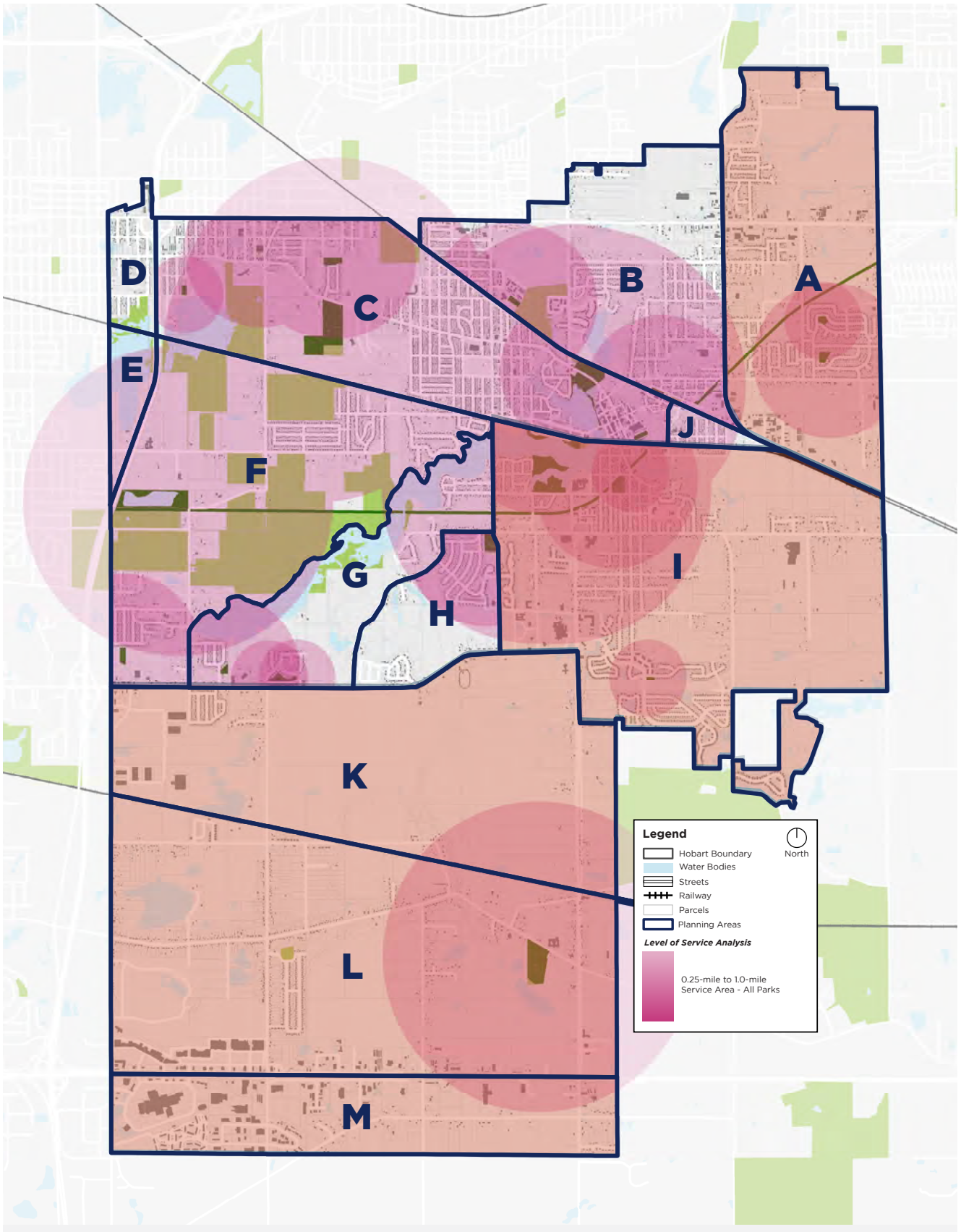


Fig 25: Overall Park Distribution Level of Service Map



HOBART'S AMENITIES

The Department manages parks that feature a variety of amenities, including:



Bandshell Pavilion



**Baseball/Softball
Diamond Fields**



Basketball Court



Canoe Kayak Launch



Fishing Area



Futsal Court



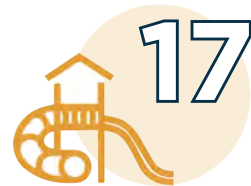
Football Field



**Pickleball / Tennis
Court**



Picnic Shelter



Playground



Pool



Rugby Field



Skate Park



Soccer Field



Splash Pad



Volleyball Court

In Addition to

Beach
Biking Trails
Boat Launches & Docks
Community Center
Open Play Areas
Track & Walking Trails

AMENITIES LEVEL OF SERVICE

Amenity Level of Service is measured by the quantity, quality, and distribution of individual recreational offerings. Quantity benchmarks for individual amenities are derived from NRPA's average recommended number of amenities. These benchmarks provide guidelines for the total number of amenities per population figures (e.g.; 1 court per 1000 population). The quality of amenities, which was identified via site visits and physical analysis, is summarized in the park scorecard assessments.

Based on the NRPA average, the City meets or exceeds the recommended number of amenities for eight out of the 14 amenities. Amenities that meet or exceed the recommended number are identified in green in the "Amenities Level of Service Analysis Table."

Amenities identified in red indicate deficiencies. While the City of Hobart is deficient in seven amenities, only five of those are well below average. Those amenities include:

- » Fishing Pier / Docks **-7.0**
- » Pickleball / Tennis Courts **-11.3**
- » Baseball / Softball Fields **-4.2**
- » Volleyball Courts **-3.9**
- » Fitness Station **-6.4**

The City is most deficient in pickleball / tennis courts. As fitness continues to be a trend nationwide, the City should consider adding outdoor fitness stations to fill that gap. Currently, Hobart offers three baseball diamond fields that support both baseball and softball activities. That is well below the recommended number of amenities for a population size of 29,219.

Additional deficiencies in amenity quantity include:

- » Boat / Canoe Launch **-0.5**
- » Dog Park **-0.29**



Programming on Lake George

Theme 4 : Park & Recreation

Table 18: Amenity Level of Service Analysis

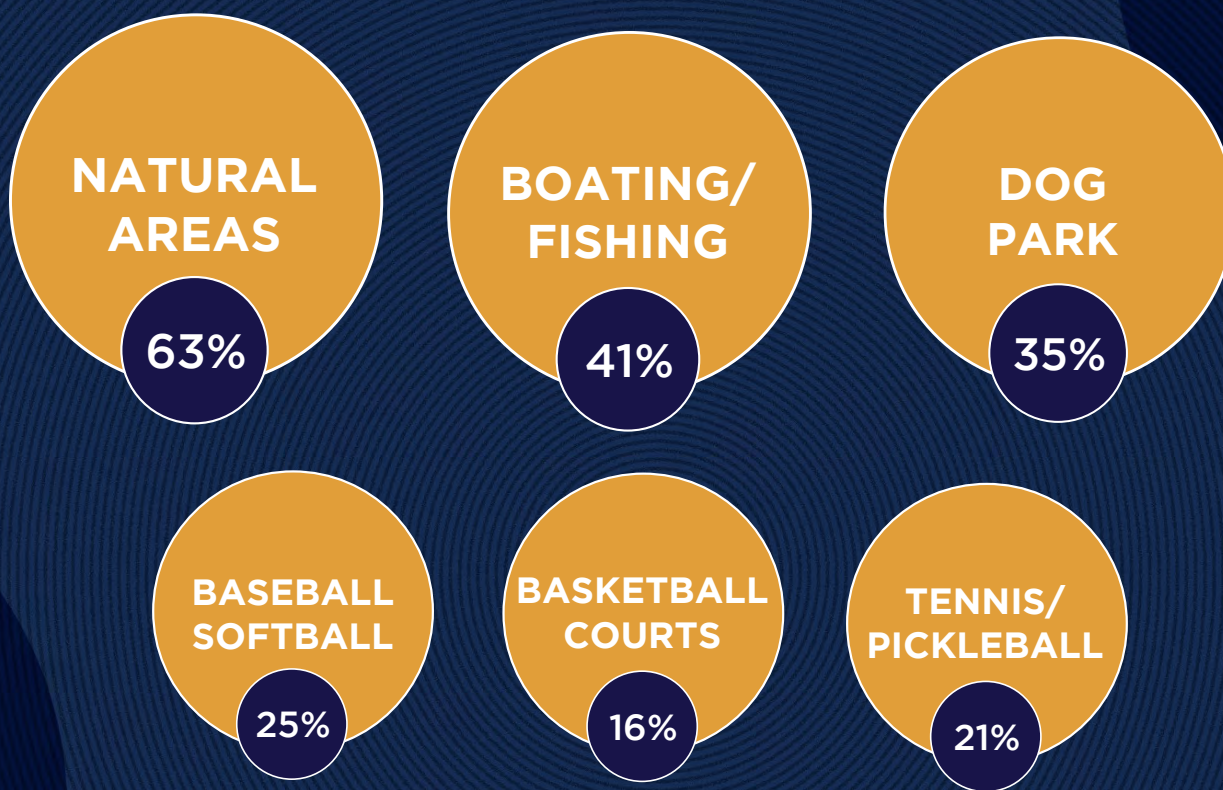
Amenity	Hobart Existing # of Amenities	NRPA Average Recommended # of Amenities <i>(Amenities / Hobart's pop.)</i>	NRPA Average Recommended # of Amenities <i>(Amenities / 1,000 pop.)</i>	Amenities Deficiency or Surplus <i>(Amenities)</i>
Fishing Pier/Docks	5.0	12.0	0.41	-7.0
Boat/Canoe/Kayak Launch	3.0	3.5	0.12	-0.5
Swimming Pools	2.0	0.87	0.03	+1.13
Splash Pads	1.0	0.87	0.03	+0.13
Fitness Stations	0.0	6.4	0.22	-6.4
Picnic Shelter	21.0	6.13	0.21	+14.87
Playgrounds	17.0	11.6	0.40	+5.4
Pickleball / Tennis Courts	3.0	14.3	0.49	-11.3
Basketball Courts	8.0	7.3	0.25	+0.7
Volleyball Courts	1.0	4.9	0.17	-3.9
Baseball / Softball Fields	3.0	7.6	0.26	-4.2
Football Fields	2.0	1.5	0.5	+0.5
Soccer Fields	6.0	5.3	0.18	+0.7
Dog Parks	0.0	0.29	0.01	-0.29
Skate Parks	1.0	0.6	0.02	+0.4



Events in Hobart

Amenities

The community echoed the results of the level of service analysis which shows a need for outdoor amenities including pickleball courts, a dog park, and volleyball courts. The bubbles below show how much of a need survey participants have for different amenities.



“ More things for children and teens of Hobart to do in the downtown area. Perhaps a new splash pad and more sand volleyball courts.

“ There is a need for a dog park next to a large and exciting kid park area, similar to what Hammond, IN has with Dowling Park.

“ Can we have Pickleball courts with lights?

SPORTS & ACTIVITY PARTICIPATION

The *Demand Potential by Propensity to Participate* is based on the socio-economic characteristics of households in the market area and their tendencies to use various products and services. While this approach estimates sports and activity participation, it also estimates potential event (e.g., culture, concert) attendance. However, this demand potential covers adults only – age 18 and above. The following page highlights sports participation and leisure experiences that are above the national averages. Overall, sports and activities in Hobart are mostly close to or above the national averages. The complete chart showing MPIs for sports and leisure activities can be found in the appendix.

MPI (Market Potential Index) measures the relative likelihood of the adults or households in the specified trade area to exhibit certain consumer behavior or purchasing patterns compared to the U.S. An MPI of 100 represents the U.S. average, and any number below 100 is considered below average, while any number above 100 is above the national average.

Hobart Park Department Events



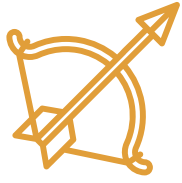
“ We love how peaceful Hobart is and the fact that we can go canoeing, kayaking, and enjoy the water

- STAKEHOLDER COMMENT



Annual Dam Duck Race

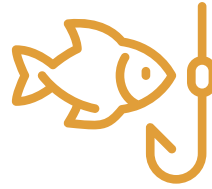
SPORTS PARTICIPATION (HIGH MPI)



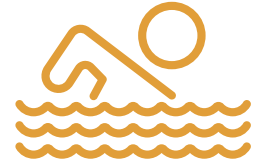
ARCHERY



CANOEING
KAYAKING



FISHING



SWIMMING



WALKING FOR
EXERCISE



VOLLEYBALL

“ Exposing Youth to more nature-based programs that have learning opportunities and development goals.

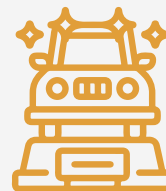
LEISURE & SOCIAL ACTIVITIES (HIGH MPI)



ATTENDED SPORT
EVENTS



ATTENDED HIGH
SCHOOL SPORTS



ATTENDED AUTO
SHOW



BIRD WATCHING



DINED OUT



ATTENDED STATE /
COUNTY FAIR



WENT TO MOVIES



WENT TO ZOO

Key Observations



Sports

Sports with the highest likelihood of participation compared to the national average are fishing, canoeing/kayaking, and archery. Sports with the highest number of participating households are walking for exercise, swimming, and fishing. The convenient access to parks and recreation areas within Hobart may hold the opportunity to attract more participants from outside of Hobart, generating activity-based businesses.



Activities

Leisure activities with the highest likelihood of participation compared to the national average are birdwatching, attending high school sport events, and going to a country music concert. Leisure activities with the highest number of households participating are catching a movie, dining out, and attending a sport event.



Lakefront Festival



Tape and Cardboard Regatta



Lakefront Festival



Hobart Programs

According to community feedback, only 25 percent of Hobart's residents are satisfied or very satisfied with programming and there are many opportunities to fill programming gaps with offerings for all ages. When asked to select the programs that they have the highest need for, Hobart residents distributed their answers fairly evenly. The highest-ranking needs included Theater, Aquatics/Splash Pad, Adult Programming, Special Events, and Youth Programming. This indicates that the community has a need for a range of program offerings, from recreational to instructional to cultural.

Some of the community's big ideas for programs include Makers Spaces, community gardening opportunities, arts programs, and clubs formed around shared interests. Overall, Hobart residents want to get more involved with their community and have the chance to learn and gather with like-minded neighbors.

I think there is a need for more arts and STEM programs in Hobart.

Community vegetable gardens and gardening programs would be great here!

Hobart should have public gardens, summer camps, after school care, and more community volunteering opportunities.

Top three program areas include:



Art in the Park



Summer Festivals



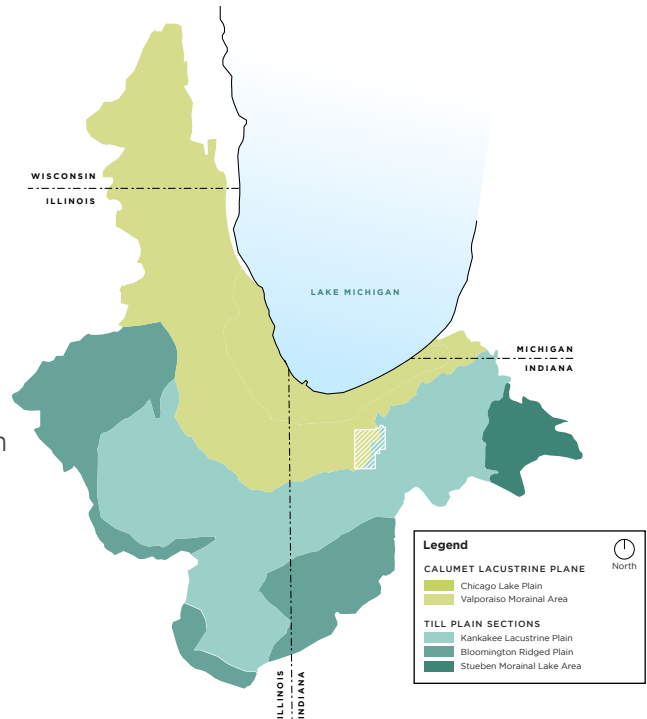
25%

Satisfaction
WITH
Programs

ENVIRONMENTAL CONTEXT

HOBART'S GEOLOGY

Hobart's vicinity is contained, for the most part, within the Calumet Lacustrine Plain. This formation is a sandy region surrounding the southern end of Lake Michigan, marking the former site of Lake Chicago. The plain of this former lake is subdivided into distinct topographic steps by three ancient beach lines. Of the three terraces, Hobart is partially located on the last two. The middle terrace, known as Calumet Beach, forms a belt more than 2 miles wide. The average elevation along this formation is about 48 feet higher than Lake Michigan. Calumet Beach is traversed by Ridge Road. This terrace is the highest and oldest of the ancient beaches, and it marks the northern edge of the soils underlain by glacial till.



SOIL CONSERVATION

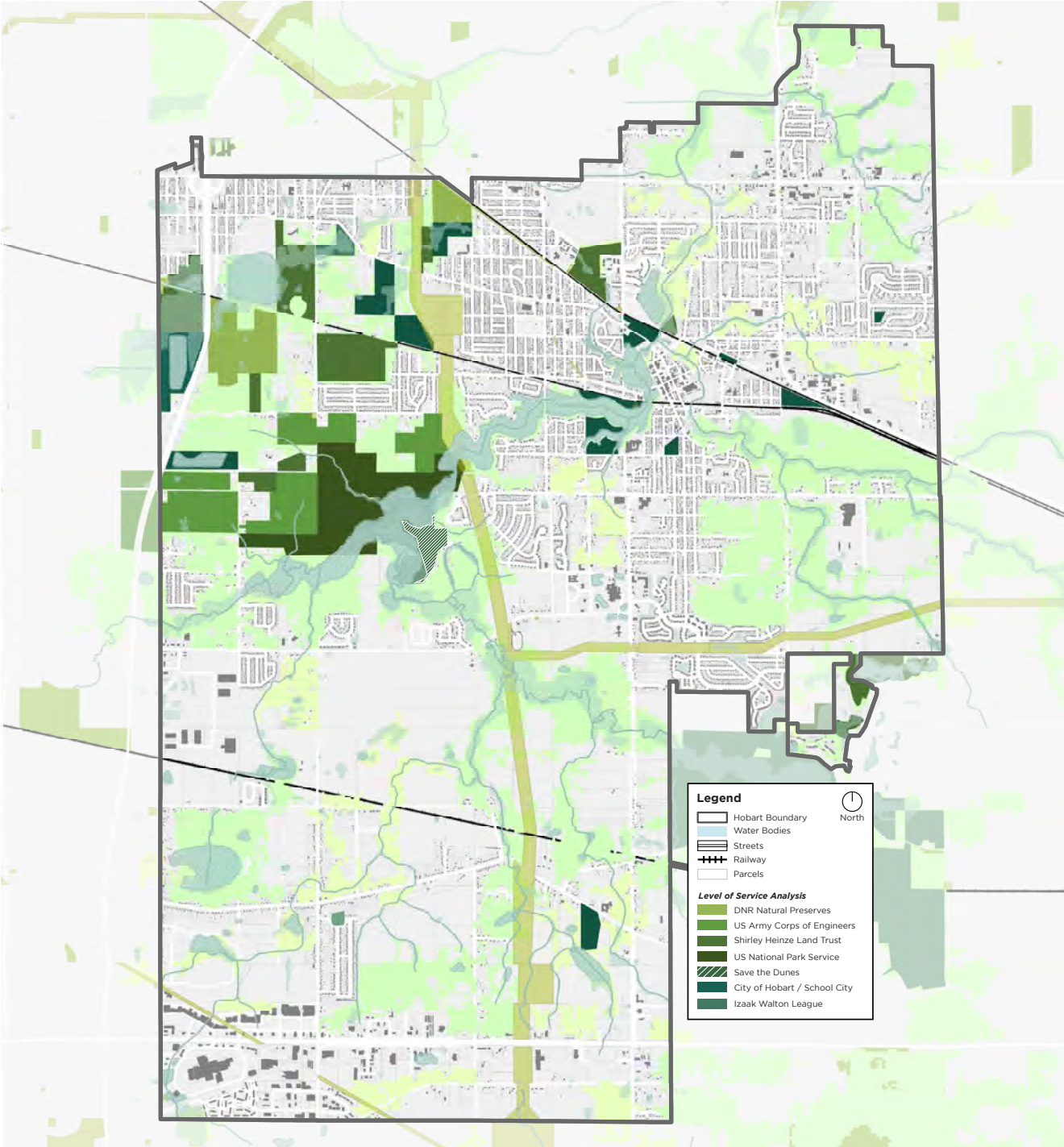
Hobart displays the occurrence of two major soil association types, according to the Soil Conservation Service of the U.S. Department of Agriculture. The first soil type, Plainfield Watseka Association, is not considered to be a very suitable soil for typical construction. When considered as a prospective topsoil source, suitability is poor, although it would make for an adequate fill. For most types of recreational facilities, including campsites, playgrounds, and intensive play areas, the soil limitations range from moderate to severe.

The second and by far the most common soil type found in Hobart is known as the Alida-Del Ray. For the most part, the surroundings are generally nearly level and somewhat poorly drained. The texture varies from medium to moderately coarse on a base of stratified glacial outwash and lake sediments. This soil association is considered of good quality when used for intensive cropping and as a topsoil. However, because of the fine texture of the soil, water will percolate rather slowly through it, impairing drainage and making it vulnerable to periodic flooding depending on the height of the water table. Moderate limitations are found with respect to recreations sites. When planning for such areas, it would be advised that special provisions be made for adequate drainage from the site.

In Hobart, the Federal Insurance Administration has defined a special flood hazard area which covers the flood plain of the Deep River beginning at the north end of Lake George and extending north to the corporate limit of Hobart. The flood plain extends between 500 and 1,200 feet along either side of the river along this distance. During the flood of September 2008, (estimated by the Army Corps of Engineers as a 140-year storm event) significant damage occurred to several of the park facilities located adjacent to Lake George, Deep River, and other tributaries.

NATURAL AREA ASSESSMENT

Fig 26: Environmental Areas & Managed Lands Map



CONSERVATION ORGANIZATIONS IN HOBART

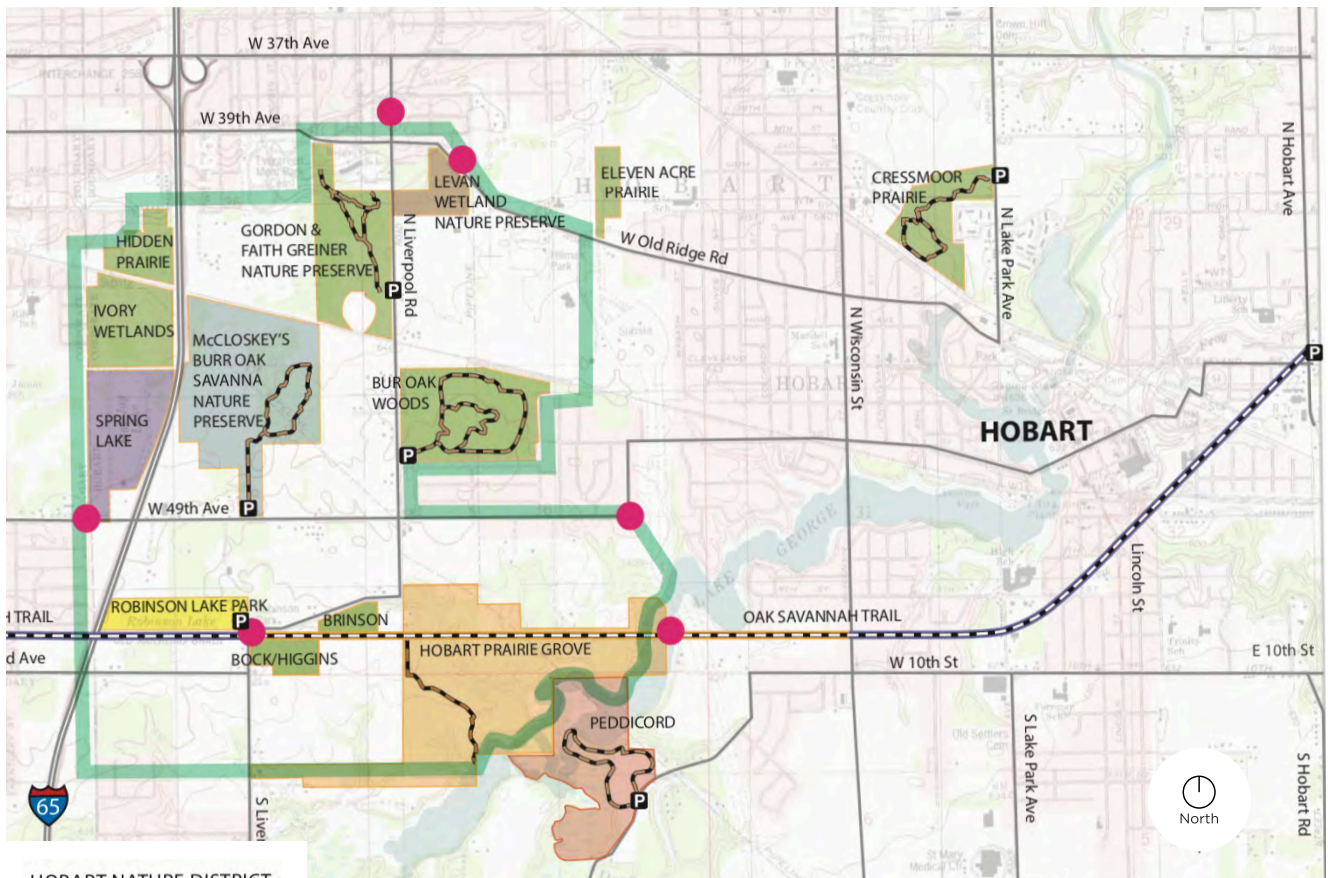
Hobart is home to over 1,000 acres of natural areas that are not owned or managed by the City. However, there are many organizations and entities working to preserve, protect, and restore Hobart's managed lands, as identified in the Natural Areas map. Hobart's natural areas include wetlands, waterbodies, natural habitats, nature preserves, forested land, among other natural and cultural resources. Below is a list of conservation organizations and a short description of their respective missions to advance natural areas in Hobart:

- » **NIPSCO** - Providing safe, reliable, and affordable energy to its more than 464,000 residential and business customers. NIPSCO regularly partners with municipalities and conservation groups to achieve conservation goals on utility right-of-ways.
- » **Indiana DNR** - To identify, protect and manage an array of nature preserves and natural areas in sufficient numbers and sufficient sizes to maintain viable examples of all of Indiana's natural communities. Nature Preserves will also manage and maintain viable populations of endangered, threatened, and rare species.
- » **US Army Corps of Engineers Mitigation** - To provide vital public engineering services in peace and war to strengthen our Nation's security, energize the economy, and reduce risks from disasters. Working with Applied Ecological Services to accomplish mitigation goals in the Hobart Marsh.
- » **Shirley Heinze Land Trust** - To protect habitats and ecosystems of northwestern Indiana through acquiring, restoring, and protecting environmentally significant landscapes for present and future generations, and to inspire and educate people of all ages about the value of land conservation to protect our natural world and enrich our lives.
- » **US National Park Service** - To preserve the unimpaired natural and cultural resources and the values of the national park system for the enjoyment, education, and inspiration of this and future generations. Indiana Dunes National Park is planning to manage its land at Hobart Prairie Grove to promote biodiversity and allow access to the public.
- » **Save The Dunes** - To preserve, protect and restore the Indiana dunes and all natural resources in Northwest Indiana's Lake Michigan Watershed for an enhanced quality of life.
- » **City of Hobart / School City of Hobart** - To preserve, maintain, protect & improve our parkland to provide a safe environment and enhance the quality of life for current and future generations.
- » **Izaak Walton League** - To conserve, restore, and promote the sustainable use and enjoyment of our natural resources, including soil, air, woods, waters, and wildlife.
- » **Woodland Savannah Land Conservancy** - Dedicated to the long-term preservation of open land in Northwest Indiana. We accept donations of land or easements on Savanna Habitat, forested land, current or former wetland, farms for open space, historic Indian lands, and any land that can be restored to its natural state.
- » **Lake County Parks** - To create and responsibly manage a county-wide system of parks and open space resources, and to provide recreational, cultural, and educational programs based on these resources for the use and enjoyment of Lake County residents and visitors.

HOBART NATURE DISTRICT

Over 1,000 acres of picturesque parks, wetlands, and floodplains, winding rivers, winding lakes, open prairies, oak savannas, old growth forests, and undulating ravines make up the Hobart Nature District in Northwest Indiana. All of these distinctive habitats offer refuge to local wildlife, including endangered and threatened species. The map below shows the various natural features and highlights the entities responsible for managing the different resources. The City of Hobart owns Robinson Lake Park, a 32-acre site with a 17-acre lake.

Fig 27: Hobart Nature District Map



- HOBART NATURE DISTRICT**
- District Boundary █
 - Gateway ●
 - Parking P
 - Paved Trail
 - Unpaved Trail
 - Natural Area Owners:
 - Shirley Heinze Land Trust
 - National Park Service
 - Indiana Dept of Natural Resources
 - Izaak Walton League
 - Woodland Savanna Land Conservancy
 - City of Hobart
 - Save the Dunes
 - Lake County Parks



Robinson Lake Park



WHY ARE NATURAL AREAS IMPORTANT?

The earth is comprised of fundamental natural resources including air, water, soil, minerals, plants, and animals. Conservation is the practice of nurturing these resources to ensure that all living things can benefit from them, now and in the future. Hobart residents, similar to the rest of the world, rely on natural resources for sustenance. Engaging in conservation not only establishes a connection to the natural world, but it also encourages healthier lifestyles for current and future generations. Aside from offering potential recreational opportunities, preserving and managing the natural environment improves air quality and reduces toxins, regulates climate change and increases carbon sequestration, as well as reduces the impacts of natural disasters. Natural areas can also significantly improve physical and mental health for communities, as well as provide opportunities for improved biodiversity for native plants and animals.



“ Natural Areas establish a connection to the natural world and encourages healthier lifestyles for current and future generations



PLANTS UNIQUE TO HOBART

Natural areas in Hobart have helped preserve rare plants and animals, a lot of which are unique to Hobart. Plant species with an asterisk are considered state threatened.

Smooth Viny Pea



Dry-mesic Upland Forest



Mesic Savanna



Mesic Prairie



Earleaf Foxglove



Prairie Violet



GOAL 1: ACCESS & EQUITY


Our parks and natural resources will be accessible, and serve residents citywide equitably, regardless of location, age, ability, or socioeconomics.


Hobart is a community that values the well-being of its people and understands the importance of parks and natural resources. To many residents, Hobart is well known for its open spaces and commitment to protecting the natural environment. Intentionally planning for an improved network that is well-distributed throughout the community would further emphasize the City’s commitment to providing open spaces. Providing access to high-need areas is a fundamental approach to ensuring equitable services and meeting current and future needs of community residents. One of the most significant barriers to accessing parks and natural resources is proximity. People who live in areas without parks or green spaces may have to travel significant distances to reach them, which can be a challenge for individuals with limited mobility or transportation options.


The Level of Service analysis outlined underserved areas and highlighted the percentage of unmet needs by planning area population. Following the recommendations of this analysis, the City can address proximity issues prioritizing the development of new parks and green spaces in underserved areas and ensure that existing parks and natural resources are well-maintained and accessible to all. The importance of park access and equity is top of mind for community leaders, recognizing potential health disparities that may result from inadequate distribution of resources, especially in low-income communities and communities of color. Planning Areas B, D, J, and L, have been identified as high-need areas given their higher concentrations of communities of color.


Planning for improved accessibility for people with disabilities, physical and non-physical alike, can provide equal opportunities for recreation and wellness. By promoting equity in park access, Hobart can promote equity and create a more inclusive and connected network.


STRATEGY 1: Identify areas in the community that lack walkable park access and prioritize high-need neighborhoods for improvements.


 **Action 1.1:** Prioritize reducing deficiencies and gaps for community parks over mini parks, referring to the distribution level of service analysis.

 **Action 1.2:** Develop joint use agreements with the Hobart City Schools District to increase access to school open spaces.

 **Action 1.3:** Quantify future needs based on potential growth within each planning area, focusing on areas with high levels of distribution deficiencies.

 **Action 1.4:** Address open space deficits through integrating planning processes with relevant ongoing plans, as feasible.

 **Action 1.5:** Develop an acquisition policy that establishes evaluation criteria and a process for identifying and prioritizing land acquisition for future parks and open spaces.

 **Action 1.6:** Identify land areas with significant natural value for future acquisition, such as heavily forested areas, environmentally sensitive areas, and lots with close proximity to water bodies, including wetlands, and more importantly Lake George.

STRATEGY 2: Aspire to develop green connections between parks and natural resources.

- **Action 2.1:** Leverage the Department’s resources toward the creation of more tree-lined streets and parkways.
- **Action 2.2:** Promote urban greening programs, such as planting trees, creating community gardens, and developing green corridors to create more open spaces throughout Hobart.
- **Action 2.3:** Develop and share a knowledgebase about the role and value of green streets, including improving air quality and providing shade in successful parks and recreation systems.

STRATEGY 3: Develop citywide proximity standards for specialized amenities, services, and conservation areas to better promote equity across the City.

- + ● **Action 3.1:** Quantify citywide demand per planning area and cross reference with the amenities level of service analysis.
- **Action 3.2:** Identify appropriate minimum number of amenity thresholds per amenity type.
- **Action 3.3:** Explore evolving trends and themes, such as climate change, healthy equity, and virtual programming, to identify specialized amenities, and develop knowledgebase about emerging recreational trends yearly.
- **Action 3.4:** Close amenity gaps in high-need communities and areas with underserved populations.



Educational Wayfinding

STRATEGY 4: Develop a wayfinding system to guide users to citywide open spaces and amenities, including the variety of natural resources in Hobart.

- **Action 4.1:** Develop a user-friendly system that can be applied consistently, ensuring flexibility of design elements and an elevated user experience.
- **Action 4.2:** Visually distinguish between the various types within parks and open spaces, including natural resources, trails, large community parks, greenways, and small pocket parks.
- **Action 4.3:** Develop new park gateways to gradually replace existing park signs.
- **Action 4.4:** Plan to integrate site improvements and landscape enhancements when installing new gateway signage.
- **Action 4.5:** Aspire to incorporate bilingual information to ensure cultural accessibility to the overall system.
- **Action 4.6:** Integrate the wayfinding system into Downtown Hobart and other pedestrian-oriented neighborhoods within the City.
- **Action 4.7:** Collaborate with other recreational entities, such as the Lake County Parks and Greenways to ensure consistent messaging and cohesive design elements.



STRATEGY 5: Aspire to increase ADA (Americans with Disabilities Act) conformity in parks and open spaces, as well as programming opportunities citywide.

- + **Action 5.1:** Continue to conform to the accessibility and universal design guidelines, updating parks and open spaces, amenities, and other facilities as provisions further expand.
- + **Action 5.2:** Conduct an ADA self-inspection annually and identify areas with extreme terrains that merit exceptions to compliance.
- **Action 5.3:** Explore opportunities to increase recreational access to individuals with developmental disabilities, as well as other non-mobility-related disabilities, such as visual and hearing loss.
- **Action 5.4:** Explore therapeutic recreation and inclusive programming, potentially designing programming exclusively for people with disabilities.

STRATEGY 6: Partner with local and regional organizations to promote health and wellness and reduce access barriers, closing the distribution gap citywide.

- **Action 6.1:** Identify transportation barriers or safety issues in high-need neighborhoods and prioritize improving multi-modal transportation networks and pathways linking these areas to recreational opportunities.
- **Action 6.2:** Coordinate with bike sharing programs in the northwest Indiana region to potentially integrate shared transportation services in community parks and near the Hobart Community Center.
- **Action 6.3:** Work with other City agencies to secure participation from new development to improve park and recreational opportunities for new residents.
- **Action 6.4:** Partner with local health organizations such as the St. Mary's Medical Center to continue advancing community wellness.

Let's All Play Place

SALEM, OREGON

In 2017, the City of Salem's Park and Recreation Department, in collaboration with Let's All Play Place Foundation, initiated a project to build an adaptive playground following universal design guidelines. This successful playground, featuring ramps, transfer stations, wheelchair accessible swings, and sensory-rich play areas, is a model for inclusive and accessible play. Input from children with disabilities and their families was at the core of this design process. Let's All Play Place intentionally serves children with physical or cognitive disabilities and has become a famous destination for school trips and community events. Funded through a combination of public and private funds, including grants, donations, and community fundraising efforts, this playground demonstrates the importance of collaboration between various entities in creating inclusive and accessible recreational spaces for all.

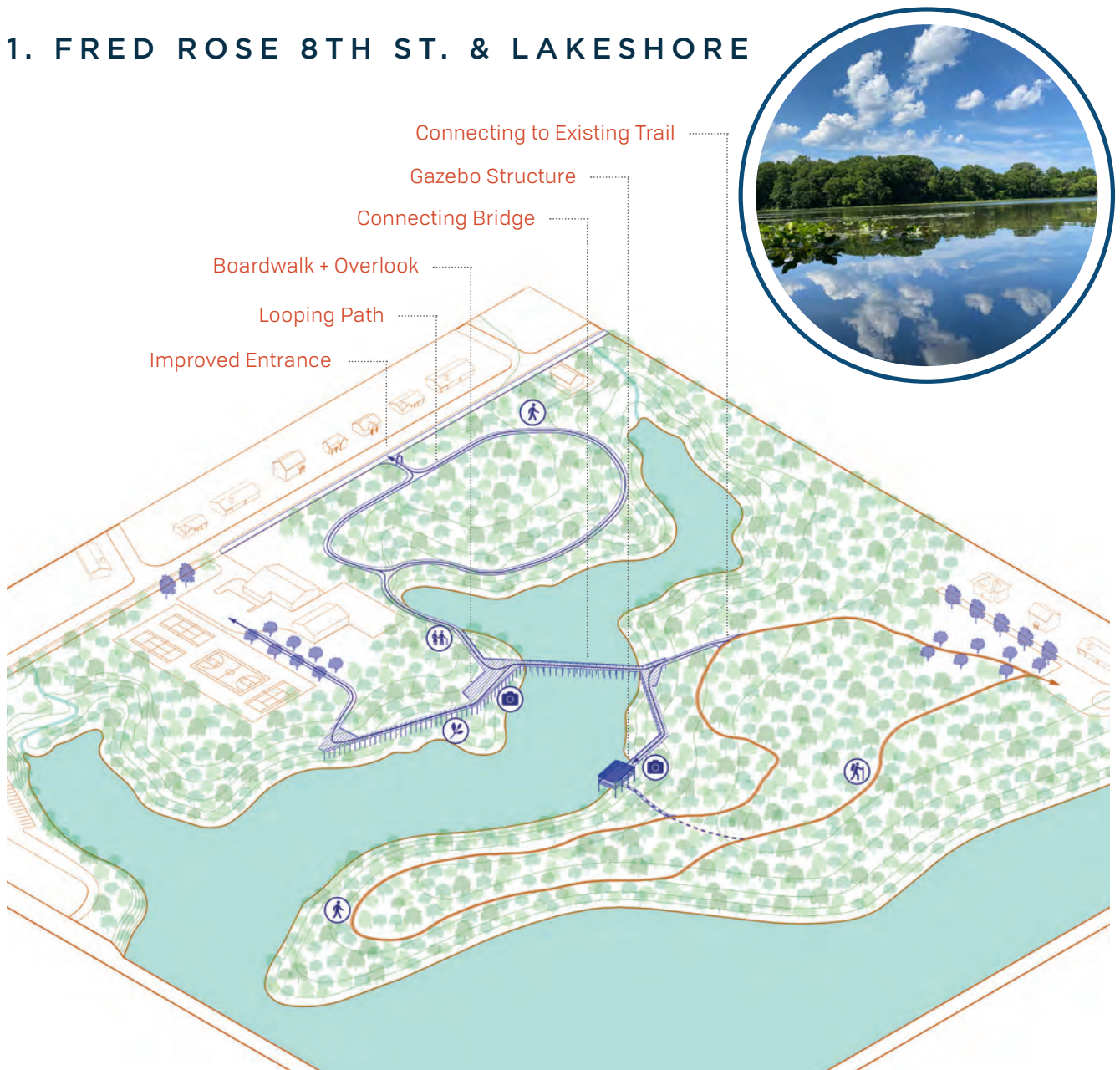


PARK IMPROVEMENTS

During the Hobart 2040 Plan process, the Park Department identified four park sites, including Fred Rose 8th St. & Fred Rose Lakeshore Parks, Festival Park, Robinson Lake, and Brickie Bowl to focus improvements on.

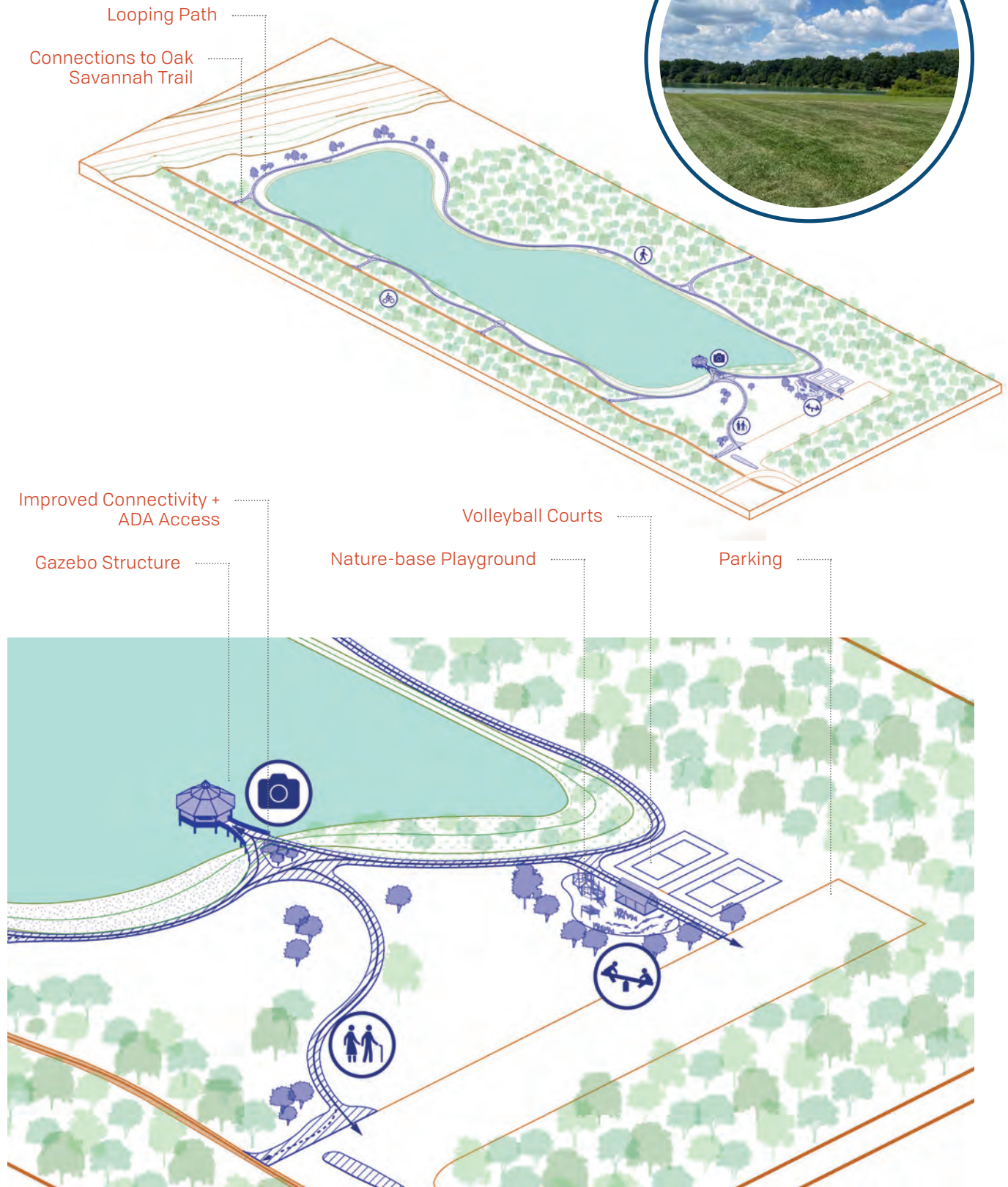
The designs help to illustrate potential improvements and lay the framework for future site planning and design efforts.

1. FRED ROSE 8TH ST. & LAKESHORE

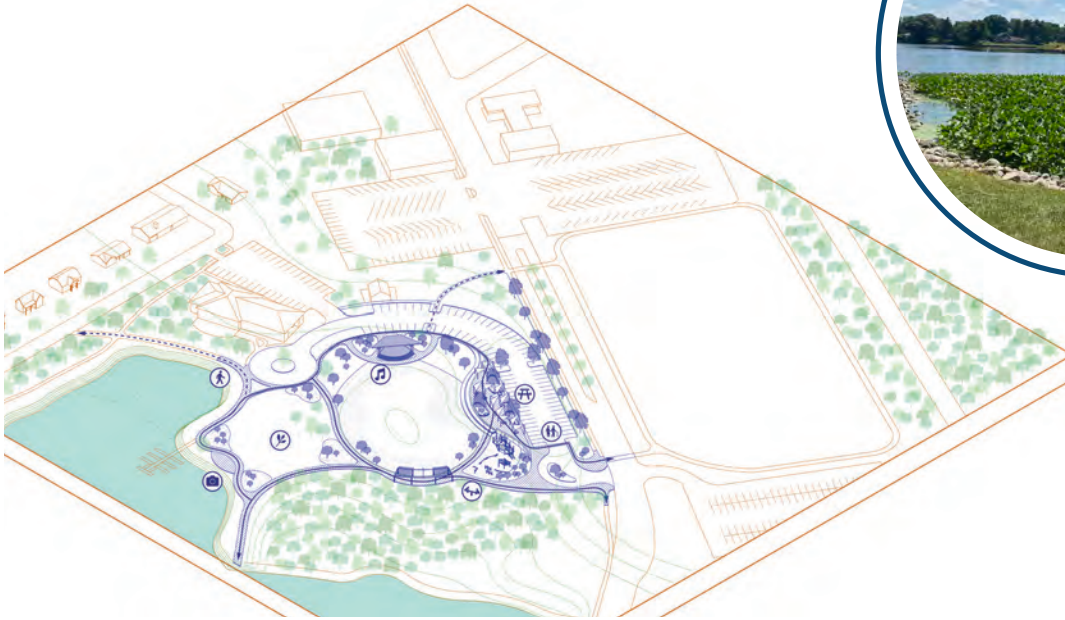


- 0 - 1 yr.
- 1 - 3 yr.
- 3 - 5 yr.
- 5 - 10 yr.
- + Ongoing

2. ROBINSON LAKE

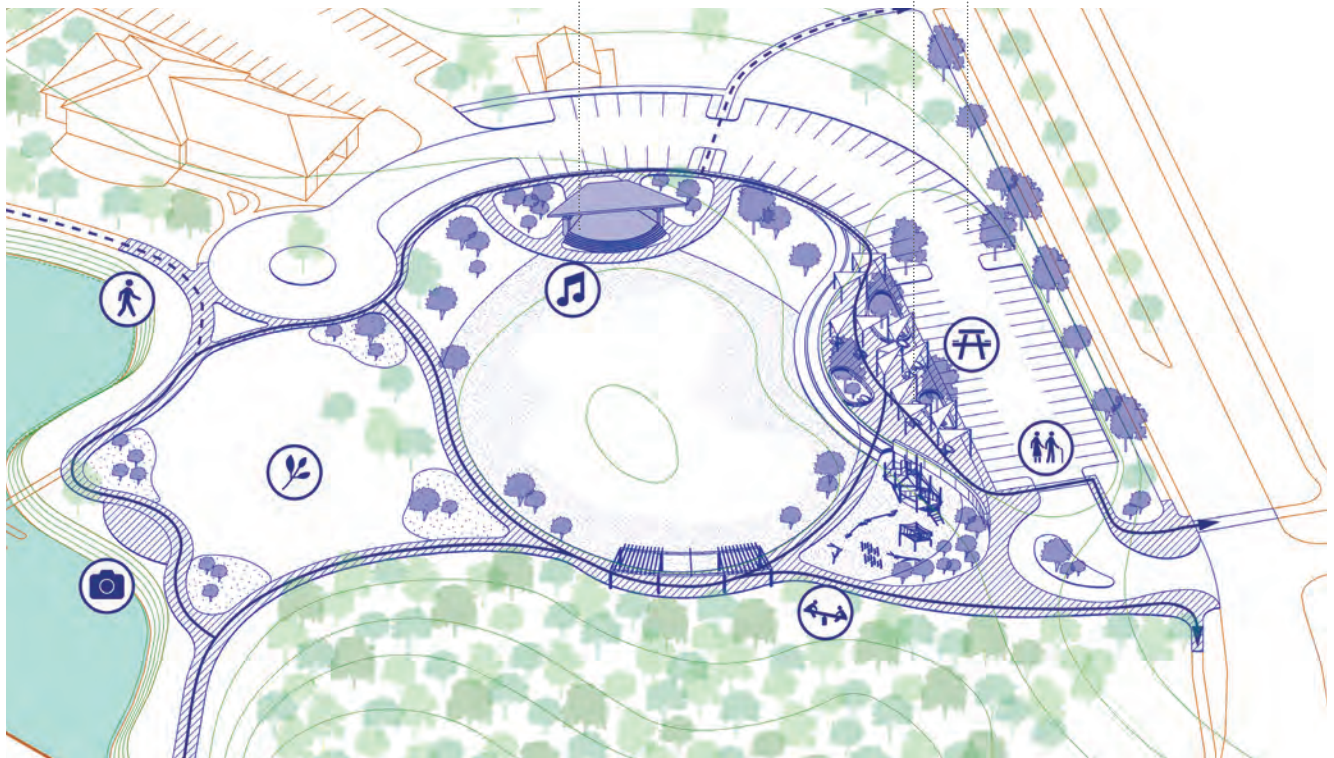


3. FESTIVAL PARK

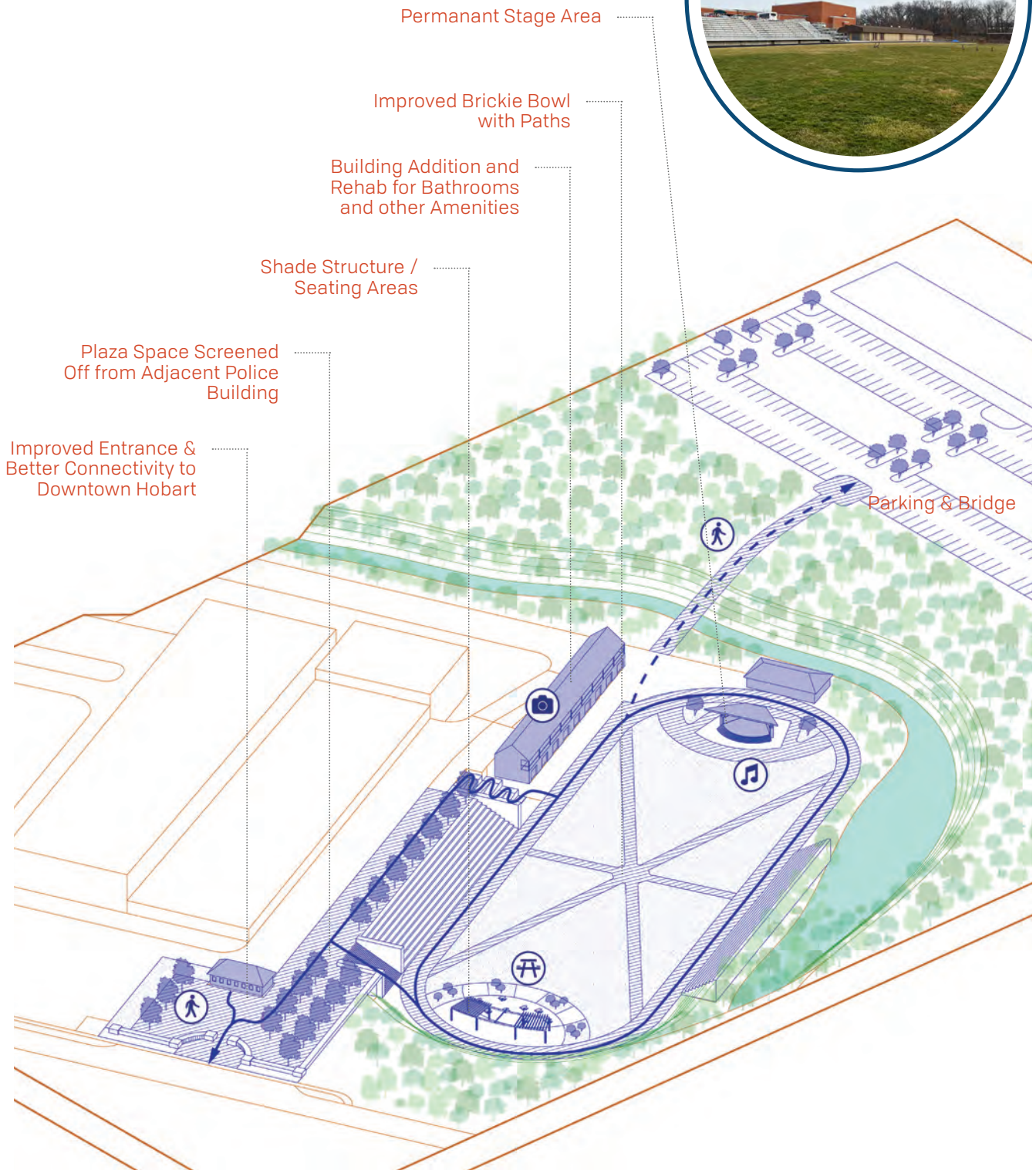


New Gazebo
Structure & Location

Improved Parking
Plaza Space



4. BRICKIE BOWL





GOAL 2: THRIVING ENVIRONMENT


Our protected parks and natural resources will be memorable, providing a sense of wonder and discovery supported by meaningful experiences with the natural environment.


Hobart is home to natural areas that are unique to the northwest Indiana region. One of the largest natural areas is Deep River County Park, which features wetlands, forests, and prairies, supporting a diverse array of plants and animal species. Hobart Marsh Wetlands, home to waterfowl and shorebird bird species, features 500 acres of wetlands and forests. Native Prairies and Savanna Habitats, protecting rare and endangered species in the region can be found in the Hobart Prairie Grove. While these natural areas are not owned by the City of Hobart's Park Department, they encompass over 15% of the community's land area. Hobart's continued collaborative efforts with sister conservation and recreation agencies can further preserve such natural resources and allow the City to take an active role in maintaining environmentally sensitive areas. This can result in numerous benefits for generations to come, addressing rising climate concerns and ensuring improved air and water quality, carbon sequestration, and biodiversity conservation. These areas also provide important ecosystem services that can benefit Hobart residents, reducing impacts of floods and regulating rising temperatures, among others.


Natural and conservation areas in Hobart can also offer residents and visitors a chance to connect with nature and learn about the local ecology and history of the region. Partnerships can lead to improved access to natural areas and potential programming, including nature-based experiences, promoting physical activity, and increased social interaction. Younger generations have a growing interest in connecting with nature through immersive experiences and educational opportunities. Hobart's unique natural resources has the potential to create programming of regional significance.


STRATEGY 1: Preserve natural areas in Hobart, promoting a culture of conservation, in collaboration with other recreational agencies.


+ Action 1.1: Continue to implement the Hobart Conservation Zoning and Sub Area Plan (adopted in 2019) to create zoning districts that aim to enhance environmentally sensitive areas.


 **Action 1.2:** Engage with allied agencies and private landowners to understand future plans for natural areas within City boundaries.

 **Action 1.3:** Collaborate with conservation organizations to conduct an urban forestry plan that addresses climate concerns, preserves neighborhood character, and balances equity across neighborhoods.

 **Action 1.4:** Encourage conservation easements to restrict the development of land and protect natural resources and consider providing tax incentives to willing private landowners.

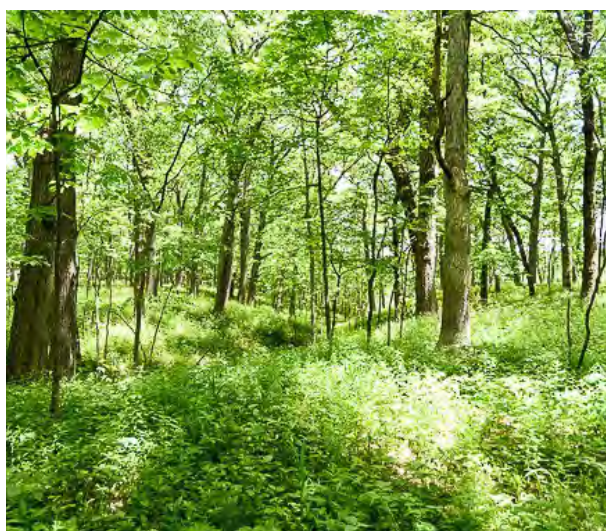
 **Action 1.5:** Assist in monitoring and evaluating natural areas to identify changes in the ecosystem, detect threats, and understand the health and condition of the environment.

 **Action 1.6:** Collaborate with other agencies to develop visions and action plans for conservation areas to expand access while balancing sensitive environmental areas.

 **Action 1.7:** Assist in developing regulations and guidelines that protect fragile natural environments and reduce disturbance to wildlife.

STRATEGY 2: Expand access to improve the experience of natural areas, encouraging more use by Hobart residents.

- **Action 2.1:** Assist in building accessible trails and infrastructure, such as boardwalks, modest bridges, and other structures.
- **Action 2.2:** Facilitate opportunities for shuttle buses and other mobility options to expand access to conservation areas.
- **Action 2.3:** Develop multiple access points to natural areas, and potentially offer drop-off areas to enhance access for users with disabilities.
- **Action 2.4:** Update the Hobart Marsh Master Plan (adopted in 2013), continuing to establish a consistent trail network that connects the City’s natural resources to Downtown Hobart, regional trails, and surrounding communities.
- + ● **Action 2.5:** Assess the feasibility of connecting existing parks and open spaces to natural areas, through expanded trails and pathways. Directional signage in the northwest area of Hobart can help guide visitors to the Nature District.



Hobart Prairie Grove

STRATEGY 3: In partnership with conservation organizations and entities, explore nature-based programming that aims to celebrate and further preserve Hobart’s unique ecosystem.

- **Action 3.1:** Explore ecotourism to highlight Hobart’s unique ecosystem, encouraging hiking, birdwatching, and wildlife photography, among other activities.
- **Action 3.2:** Explore the feasibility of high-quality educational wayfinding that describes the flora and fauna in various natural areas for passive recreation opportunities.
- **Action 3.3:** Develop a citizens science program, in collaboration with School City of Hobart and other educational entities, to promote research efforts such as collecting data on wildlife populations and tracking biodiversity patterns, among other initiatives.
- **Action 3.4:** Explore native plant restoration programming, including removal of invasive species, planting native species, and conducting ongoing clearings and maintenance efforts to ensure plants thrive.
- **Action 3.5:** Develop a volunteer-based trail program, encouraging stewardship of greenways and caring for pathways connecting the Nature District.



Nature Programming - Character Image

● Ongoing +
 ● 5 - 10 yr.
 ● 3 - 5 yr.
 ● 1 - 3 yr.
 ● 0 - 1 yr.

STRATEGY 4: Promote natural areas in Hobart.

- **Action 4.1:** Invest in education and outreach, including workshops, public events, and other public education campaigns that highlight the importance of preserving natural areas and can help build support for conservation efforts.
- **Action 4.2:** Develop and implement a conservation areas media outreach campaign to improve outreach efforts and highlight the natural and recreational opportunities in the park system.
- **Action 4.3:** In collaboration with other managing agencies, explore the feasibility of a Nature District mobile app that serves as a guide to outdoor activities, such as birdwatching, and allows users to contribute to the information and report sightings of wildlife and plant species.
- **Action 4.4:** Grow a volunteer base that focuses on preserving and promoting the various natural resources in the City, engaging the growing Gen Z and Senior populations in Hobart.

Friends of the Cedarburg Bog

CEDARBURG, WISCONSIN

Friends of the Cedarburg Bog, a non-profit organization, focused on education and outreach efforts to protect and promote a unique wetland ecosystem that supports rare and endangered plant and animal species. Some of their programs include organized guided hikes and field trips for school groups, nature clubs, and other organizations. They have also hosted public lectures and workshops on topics such as wetland ecology, bird identification, and invasive species management. Their success demonstrates the importance of engaging the public in conservation efforts and building broad-based support for environmental stewardship.



Shirley Heinze Land Trust Volunteers

GOAL 3: ACTIVE COMMUNITY

Our parks and natural resources will be integral to our active hubs, bringing convenience and enjoyment, as well as tangible benefits to the overall quality of life.

The Hobart Park Department is committed to providing a diverse range of year-round programming and events that cater to the growing interests of the community. Hobart residents overwhelmingly show support for community events, including the Summer Concert Series which features a variety of musical genres, as well as Movies in the Park, showing family-friendly movies. Other special events that stakeholders emphasized include the annual Easter Egg Hunt, the Halloween Haunted Hayride, and the Christmas Tree Lighting Ceremony.

Park and recreation trends, including programs and events, are constantly evolving, heavily influenced by changing demographics, shifting cultural values, and more recently new technologies. Such factors influence the way people engage with outdoor spaces and provide opportunities for creative programming and use of parks. This was made clear during the pandemic, where the majority of programming shifted to virtual, and the community found new ways to celebrate togetherness, often represented in simple gatherings.

Aside from planned events, the Park Department should continue to leverage existing facilities and natural resources for future programming opportunities. Lake George, one of Hobart's strongest assets, was a recurring topic in community conversations. Residents see immense value in accessing, and more importantly, activating this natural asset. Attracting visitors and new businesses to Downtown Hobart, Lake George can influence the growth of the City economically. Expanding on the existing infrastructure to allow more access to Lake George would also foster a sense of community in Hobart.

STRATEGY 1: Maximize the flexibility of the Hobart Community Center to encourage the use of the space as a community hub and a facility for pilot recreation offerings.

Action 1.1: Reach out to local organizations, such as local churches, the School City of Hobart, non-profits, and community groups, to collaborate on events and activities that can be hosted at the Center.

Action 1.2: Create a more welcoming atmosphere that builds flexibility and comfort for users, including a community bulletin board and display of artwork created by Hobart residents.

Action 1.3: In collaboration with local health organizations and providers, provide wellness amenities and services, such as counseling services that can make the Center more valuable to Hobart residents.

Action 1.4: Host additional regular low-key events such as potluck dinners, game nights, and other activities that bring residents together and foster a sense of community and ownership of the space.



Wedding at the Hobart Community House

Ongoing
+ Ongoing
5 - 10 yr.
3 - 5 yr.
1 - 3 yr.
0 - 1 yr.

STRATEGY 2: Continue to build a knowledgebase of emerging trends and innovative park and recreation amenities to encourage active lifestyles and respond to growing community needs.

+ Action 2.1: Actively research, test, and implement new park facilities and programs to respond to emerging trends.

○ Action 2.2: Review opportunities to expand low- or no-cost programming in areas that may be lacking based on local community need, interest, grant opportunities, and funding availability.

○ Action 2.3: Explore an urban agriculture program that provides resources and support to Hobart residents interested in gardening, emphasizing the importance of local food systems and community gardening.

○ Action 2.4: Explore technology integration, providing virtual programming opportunities, including online fitness classes, arts and crafts, and other activities.

+ Action 2.5: Continue to explore pop-up programming, such as playstreets, green alleys, pop-up gardens, and temporary art installations, among other forms of tactical urbanism strategies that activate underutilized spaces.



Pickleball Character Image

STRATEGY 3: Ensure Lake George remains accessible by the Hobart community through a variety of safe and unique programming.

○ Action 3.1: Evaluate the feasibility of easements along Lake George, particularly the southern end, to increase access points and preserve and activate the lake shore.

+ Action 3.2: Continue hosting the cardboard regatta every year and explore ways to grow and improve this activity.

» *Incorporating a fun theme, such as pirates, superheroes, or a specific time period.*

» *Displaying the regattas designed by residents, ahead of the event.*

» *Incorporating obstacles or challenges into the racecourse, such as floating platforms or objects*

» *Offering workshops or classes in the weeks leading up to the event to teach participants how to build their own regattas. This can be led by community residents.*

○ Action 3.3: Support City-managed kayak rental stations at key locations around Lake George.

○ Action 3.4: Explore pilot programming to further activate Lake George, including floating movie night, nighttime paddle tour, yoga on the water, paddleboat racing, and more.

**“Summer Blast”
Floating Movie Night
GRAPEVINE, TX**

**“Paddleboard Bliss”
Yoga on the Water
SARASOTA, FL**

**“Mobile Art Gallery”
Floating Art Show
TORONTO, CANADA**

Ongoing

+ 5-10 yr.

3-5 yr.

1-3 yr.

0-1 yr.

STRATEGY 4: Offer thoughtful and unique programming opportunities that appeal to the demographic makeup of Hobart and provide opportunities for socialization and engagement.

- + **Action 4.1:** Revitalize youth programming such as the youth summer camp program.
- **Action 4.2:** Encourage multi-cultural programming and attract underserved audiences, particularly Hobart's African American and Hispanic populations.
- **Action 4.3:** Explore storytelling and oral history projects as means to preserve Hobart's heritage through administered programs.
- **Action 4.4:** Encourage community service programs, such as planting a community garden, cleaning up a park, and other activities tailored to bringing people together towards a common goal.
- **Action 4.5:** Encourage multi-generational programming, including cross-generational mentorship programs, where older and younger generations share knowledge.

STRATEGY 5: Aspire to provide events and programming of regional significance.

- **Action 5.1:** Collaborate with private and non-profit partners, as well as neighboring park departments, to promote destination activities in Hobart and the Northwest Indiana region, such as outdoor adventure opportunities, nature-based programming, and access to water.
- **Action 5.2:** Leverage partnerships with local and regional organizations to offer targeted programming.
- + **Action 5.3:** Continually explore innovative programming that can generate buzz and attract regional visitors.







GOAL 4: EXPANDING CAPACITY

Our parks and natural resources will benefit from operational and financial capacity building, achieving improved effectiveness and securing more financial resources.





Operational and financial capacity building ensures effectively managing parks and natural resources. Hobart’s parks are managed by a dedicated team of City staff, and continuing to develop the skills, knowledge, and resources necessary will maximize the overall system’s potential. The park scorecard system identified a list of recommendations for each park or natural resource area which can be better addressed through a maintenance and management plan.

Financial capacity building also involves managing budgets, identifying funding sources, and prioritizing investments in the overall system. Financial capacity building can also involve developing new revenue streams, with a focus on achieving financial stability over the years. Hobart’s commitment to parks and recreation has not gone unnoticed. In 2021, the city was awarded a \$10,000 grant from the Indiana Office of Community and Rural Affairs to fund improvements to Festival Park. The city was also recognized in 2020 as a Tree City USA community for its commitment to urban forestry. Continuing to secure funding and gain recognition will open more doors for the Park Department and expand capacity.

STRATEGY 1: Aspire to foster a culture of continuous improvement citywide, and particularly for the Parks Department.

-  **Action 1.1:** Increase cultural competencies and diversity of Hobart’s staff.
-  **Action 1.2:** Recruit community residents to lead programs.
-  **Action 1.3:** Invest in succession planning for program staffing to ensure seamless transitions between older and newer staff.
-  **Action 1.4:** Convene Department leadership and staff to proactively evaluate strengths, weaknesses, aspirations, and results, at key open spaces and facilities.

STRATEGY 2: Advance maintenance practices and operate according to a formalized plan to continue providing high quality of life for residents and visitors.

-  **Action 2.1:** Establish a Parks Maintenance Manual that clarifies standards, work schedules, field condition assessments, and renovation recommendations, among other improvements.
-  **Action 2.2:** Continue to address deferred maintenance across the system, working with the community to make improvements that enhance the overall quality of parks, facilities, and amenities.
-  **Action 2.3:** Incorporate each park’s ecological conditions into design and maintenance through water management, plant species, soil management, and erosion control.
-  **Action 2.4:** Implement an Adopt-A-Park program to facilitate citizen-based maintenance and care for parks.

 0 - 1 yr.
 1 - 3 yr.
 3 - 5 yr.
 5 - 10 yr.
 + Ongoing

STRATEGY 3: Continue engaging, informing, and soliciting valuable insights that can inform decision-making and help ensure that park facilities and programs are meeting the needs of residents.

- **Action 3.1:** Employ engagement strategies to deepen community and employee outreach and engagement to better understand perspectives and needs.
- **Action 3.2:** Develop a digital and hard copy recreation guide highlighting Park Department programs and planned events to community residents at a low cost.

STRATEGY 4: Aspire to increase financial sustainability and diversify funding sources.

- **Action 4.1:** Pass a percent-for-parks ordinance to secure additional funds dedicated to community open spaces.
- **Action 4.2:** Support the development of a comprehensive nonprofit, such as a Park Foundation, to help promote and fund park and recreation improvements and awareness.
- **Action 4.3:** Develop additional revenue-generating event spaces, overlooking natural areas and water features such as Robinson Lake.
- **Action 4.4:** Consider employing concession stands at community parks to improve visitor experience and increase revenue sales.
- **Action 4.5:** Offer rental of recreational equipment, including kayak rentals and other water-based programming equipment, increasing the potential of revenue generation.
- ✦ **Action 4.6:** Continue to explore alternative funding strategies, including grants, to address unmet needs and expand and enhance Department services.



THEME 4 STRATEGIES & PARTNERS	
Goal 1: Access & Equity	
MEDIUM	<p>STRATEGY 1: Identify areas in the community that lack walkable park access and prioritize high-need neighborhoods for improvements.</p> <p>Partners: Hobart Park Department</p>
HIGH	<p>STRATEGY 2: Aspire to develop green connections between parks and natural resources.</p> <p>Partners: Hobart Park Department, City of Hobart, Northwest Indiana Greenways and Trails, Southshore Trails</p>
LOW	<p>STRATEGY 3: Develop citywide proximity standards for specialized amenities, services, and conservation areas to better promote equity across the City.</p> <p>Partners: Hobart Park Department</p>
MEDIUM	<p>STRATEGY 4: Develop a wayfinding system to guide users to citywide open spaces and amenities, including the variety of natural resources in Hobart.</p> <p>Partners: Hobart Park Department, City of Hobart</p>
MEDIUM	<p>STRATEGY 5: Aspire to increase ADA (Americans with Disabilities Act) conformity in parks and open spaces, as well as programming opportunities citywide.</p> <p>Partners: Hobart Park Department, City of Hobart, Access Board, Northwest Indiana Special Recreation Association, Lake County Parks and Recreation Department</p>
HIGH	<p>STRATEGY 6: Partner with local and regional organizations to promote health and wellness and reduce access barriers, closing the distribution gap citywide.</p> <p>Partners: Hobart Park Department, School City of Hobart, Lake County Parks & Recreation, IPRA, Indiana Department of Natural Resources</p>
Goal 2: Thriving Environment	
HIGH	<p>STRATEGY 1: Preserve natural areas in Hobart, promoting a culture of conservation, in collaboration with other recreational agencies.</p> <p>Partners: Hobart Park Department, IDNR, IPRA, Indiana Wildlife Federation, Shirley Heinze Land Trust</p>
MEDIUM	<p>STRATEGY 2: Expand access to improve the experience of natural areas, encouraging more use by Hobart residents.</p> <p>Partners: Hobart Park Department, IDNR, IPRA, Indiana Wildlife Federation, Shirley Heinze Land Trust</p>
LOW	<p>STRATEGY 3: In partnership with conservation organizations and entities, explore nature-based programming that aims to celebrate and further preserve Hobart’s unique ecosystem.</p> <p>Partners: Hobart Park Department, IDNR, IPRA, Indiana Wildlife Federation, Shirley Heinze Land Trust, Northwest Indiana Audubon Trust</p>

	STRATEGY 4: Promote natural areas in Hobart.	Partners: Hobart Park Department, City of Hobart, IDNR, Northwest Indiana Clean Air Council
--	---	--

Goal 3: Active Community

LOW	STRATEGY 1: Maximize the flexibility of the Hobart Community Center to encourage the use of the space as a community hub and a facility for pilot recreation offerings.	Partners: Hobart Park Department, City of Hobart, St. Mary’s Medical Center, Northwest Indiana Senior Services, Boys & Girls Club of Northwest Indiana, YMCA of Northwest Indiana
------------	--	--

MEDIUM	STRATEGY 2: Continue to build a knowledgebase of emerging trends and innovative park and recreation amenities to encourage active lifestyles and respond to growing community needs.	Partners: Hobart Park Department, City of Hobart, School City of Hobart, Lake County Parks & Recreation, IPRA, Southshore Arts
---------------	---	---

HIGH	STRATEGY 3: Ensure Lake George remains accessible by the Hobart community through a variety of safe and unique programming.	Partners: Hobart Park Department, City of Hobart, Lake County Park and Recreation, Northwest Indiana Paddling Association
-------------	--	--

HIGH	STRATEGY 4: Offer thoughtful and unique programming opportunities that appeal to the demographic makeup of Hobart and provide opportunities for socialization and engagement.	Partners: Hobart Park Department, City of Hobart, Hobart Human National Association for the Advancement of Colored People (NAACP)
-------------	--	--

LOW	STRATEGY 5: Aspire to provide events and programming of regional significance.	Partners: Hobart Park Department, City of Hobart, Local Artists, Indiana Arts Commission
------------	---	---

Goal 4: Expanding Capacity

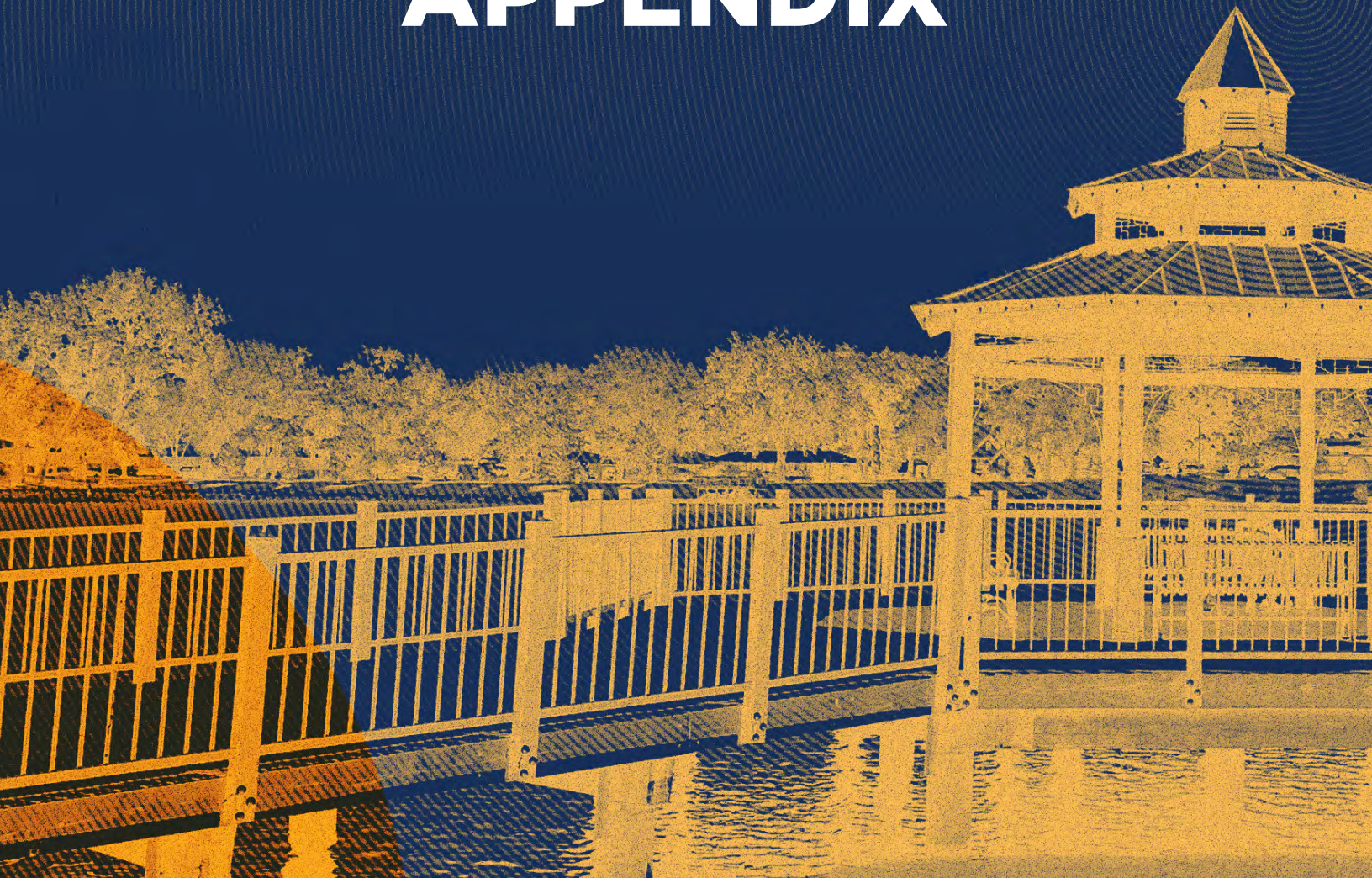
MEDIUM	STRATEGY 1: Aspire to foster a culture of continuous improvement citywide, and particularly for the Parks Department.	Partners: Hobart Park Department, City of Hobart
---------------	--	---

HIGH	STRATEGY 2: Advance maintenance practices and operate according to a formalized plan to continue providing high quality of life for residents and visitors.
-------------	--

MEDIUM	STRATEGY 3: Continue engaging, informing, and soliciting valuable insights that can inform decision-making and help ensure that park facilities and programs are meeting the needs of residents.
---------------	---

LOW	STRATEGY 4: Aspire to increase financial sustainability and diversify funding sources.
------------	---

APPENDIX





SUMMARY

This chapter includes additional information referenced in the Comprehensive Plan, including:

1. Park and open space inventory matrix
2. Park scorecards
3. Sports Participation MPI in Hobart
4. Leisure & Social Activity MPI in Hobart
5. Sport Participation by Group

Appendix

Table 1: City of Hobart Park Matrix

CITY OF HOBART PARK MATRIX																															
PARK NAME / PARK TYPE	ACRES	ADA Accessible	Bandshell Pavilion	Baseball / Softball Diamond	Basketball Court	Beach	Bike Trail	Boat Dock	Boat Launch	Canoe / Kayak Launch	Community Center	Fishing	Futsal Court	Football Field	Open Play Area	Parking	Pickleball / Tennis Court	Picnic Shelter / Gazebo	Playground / Swing	Pool	Restrooms	Rugby Field	Scout Cabin	SkatePark	Storage	Sledding Hill	Soccer Field	Splash Pad	Track	Volleyball Court	Walking Trail
MINI PARKS																															
Amber Creek Park	3.42	X												X				1	1												X
Arbor Lane Park	2.00	X																1	1												
Barrington Ridge Park	1.00	X																1	1												
Englehart Park	1.59													X					1												
Doughboy Monument	0.25																														
TOTAL ACREAGE	8.25	0	0	0	0	0	0	0	0	0	0	0	0	0	0	0	0	3	4	0	0	0	0	0	0	0	0	0	0	0	0
NEIGHBORHOODS PARKS																															
Brookview Park	1.50	X		1														1	1												
Brickie Bowl	1.50						1						1								X				1				1		
Deep River Parkway	10.00													X															1		
Emily Silich Park	1.81			1														1	1												
Glenwood Park	6.80			1															1												
Hillman Heights Park	3.41			1														1	1												
Hobart City Ball Park	5.33	X	1			X												1	1		X										
Hobart Community Pool	5.10	X													X		1		2	X			1				1		1		
Jerry Pavese Park	8.00						1	1		1					X		1	1		X		1									
Lakefront Park	2.00	X					1			1								1													
McAfee Park	2.67			1										X			1	1													
Merrillville Heights Park	2.50														X			1	1												
Pennsy Park	2.20					X								X		2	1	1		X											
Pleak Park	6.40																														
Soccer & Rugby Field	8.26								1		1				X							1					1		1		
Ted Hansen Park	1.36	X													X		1	1													
TOTAL ACREAGE	68.82	0	1	5	0	3	1	1	0	3	0	1	0	1	0	2	10	9	2	1	1	1	1	1	0	1	1	3	1	0	
COMMUNITY PARKS																															
Festival Park	8.91	X	1				1	1	1	1				X	X			1		X											
Fred Rose 8th. St. Park	26.08			2								1					1	1	1	X											
Fred Rose Lakeshore										1								1	1												X
Hillman Park	33.30		2	1									1					2		X						5					
Robinson Lake Park	32.68				X									X	X			2		X				X							
Veteran's Memorial Park	19.75													X	X			2	1	X				X	1	2					
TOTAL ACREAGE	120.71	1	2	3		1	0	1	1	2	1	1				1	8	4	0	0	0	0	0	1	7	0	0	0	0	0	
BIKE / PEDESTRIAN TRAIL																															
Oak Savannah Trail	8 mi	X																													
TOTAL	197.79	1	3	8		4	1	2	1	5	1	2				3	21	17	2	1	1	1	1	1	8	1	3	1	0	0	

SAMPLE PARK SCORECARD

Park Details

HILLMAN HEIGHTS PARK

Location: 2500 N. Hansen Blvd.
Size: 3.41 acres

Features and Amenities

Basketball Court
 Picnic Shelter
 Playground / Swings

NEIGHBORHOOD PARK

Park Category

B

Score = 3/4

Score

Background & Description

Site Description

Located in the Hillman Heights subdivision, Hillman Heights Park offers recreational amenities including two play structures, a swing set, a basketball court, and a picnic shelter with picnic tables. The playground to the east is older and has been recently renovated with painted metal posts. The picnic shelter overall is in poor condition and requires maintenance. Adjacent, yet spatially separated from the old play structure, is a swing set that is showing wear and is rusting. The playground to the west is brand new and features new safety features such as wood chip surfacing and defined edging. A basketball court separates the two play structures and is in fair condition. Features of the park are not well connected and do not cohesively integrate within the context as a whole are not well connected and are positioned against one another in an uncoordinated manner. Overall, Hillman Heights Park has a welcoming feel with mature trees and could potentially promote additional active and passive recreational features and amenities.

Hillman Heights park received a score of 3/4.

Recommendations

- Recommendations**
- » Repair/replace dated and rusted play equipment, including the swing set
 - » Consider multi-generational passive recreation features
 - » Consider basketball court resurfacing and re-stripping
 - » Consider adding seating pockets, including benches
 - » Consider better aligning future site amenities
 - » Provide additional wayfinding and signage



Picnic Shelter
Fair condition



New Play Equipment
Excellent condition

Photos



Aerial

AMBER CREEK PARK

Location: 2900 Topaz Dr.

Size: 3.42 acres

Features and Amenities

Picnic Shelter
Playground / Swings
Open Play Area
Walking Trail

This park is ADA accessible

MINI PARK

B+

score = 3.5/4



Play Structure
Fair condition



Picnic Shelter
Good condition

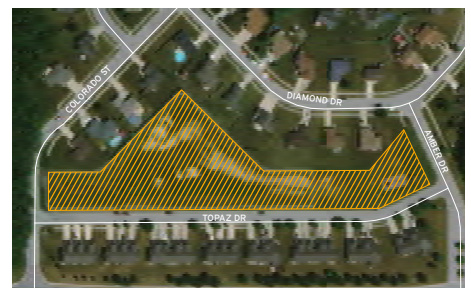
Site Description

Amber Creek Park is a modest-sized park, enveloped within a newer residential subdivision. Originally, this open space was deeded to the City for storm water retention. Recreational features, including the play structure, swings, and picnic shelter were developed by the Hobart Parks & Recreation department. The site is well-sized and equipped for immediate users, but can benefit from additional features to help serve a broader group of residents group of users. Given its proximity to residential properties, adding a vegetative buffer can increase privacy for immediate residents.

Amber Creek Park received a score of 3.5/4. This open space is in good condition and has the land capacity to offer additional active recreation opportunities.

Recommendations

- » Consider additional seating areas
- » Plant additional shade trees along paths and near residences to buffer and reinforce park edges
- » Consider planting shrubs and creating vegetated areas
- » Develop additional active recreation features and amenities, such as a sled hill or walking path



ARBOR LANE PARK

Location: Barberrry Dr. & Cypress Ln.

Size: 2.0 acres

MINI PARK

B+

score = 3.5/4

Features and Amenities

Picnic Shelter

Playground / Swings

This park is ADA accessible

Site Description

Located within a residential subdivision, Arbor Lane Park serves the recreational needs of immediate residents. This site features a brand new play structure that is in excellent condition, surrounded by mature maple trees and an abundance of oak trees. Overall, the site could benefit from improved forestry practices to better maintain the mature canopy, as well as removal and replacement of poor or dead trees. A few benches are scattered, the majority of which are in poor condition. A modest-sized picnic shelter sits adjacent to the playground and is in fair condition. Similar to other neighborhood parks in Hobart, Arbor Lane Park has the potential to feature additional active recreation features.

Arbor Lane Park received a score of 3.5/4

Recommendations

- » Formalize site furniture, including trash receptacles and improved benches
- » Consider a walking path with seating areas within the forested area of the site to
- » Consider additional active recreation features/amenities
- » Formalized park entrance with new signage/gateway
- » Plant additional landscaping along the perimeter of the park to better screen the adjacent residential area



Play Structure

Brand new - excellent condition



Picnic Shelter

Fair condition



BARRINGTON RIDGE PARK

Location: Capitol & Bracken Pkwy

Size: 1.0 acres

Features and Amenities

Picnic Shelter
Playground / Swings

MINI PARK

B+

score = 3.5/4



New Play Structure
Excellent condition



Picnic shelter
Fair condition

Site Description

Barrington Ridge Park, was originally installed by the developer of the Barrington Ridge subdivision. The site features a brand new play structure that is in excellent condition. The park features little to no vegetation and can benefit from adding shade and ornamental trees throughout, especially around the play elements. The swing set is in poor condition, and the shelter on site is dated and showing wear and tear. There are no benches on site and the only seating areas are two picnic tables under the picnic shelter. A new ADA sidewalk has been recently installed to link the playground and shelter area to the sidewalk along Capitol Drive.

Barrington Ridge Park received a score of 3.5/4. The new play structure and ADA path contributed to the overall high score.

Recommendations

- » Plant shade trees and additional seating areas
- » Provide site fencing for better enclosure provide perimeter ornamental fencing for better enclosure of the park space
- » Address repair or replace damaged or worn equipment, including the swing set/equipment, including the swing set
- » Consider additional active recreation features/amenities



ENGLEHART PARK

Location: 4101 Howard St.

Size: 1.58 acres

MINI PARK

Features and Amenities

Playground / Swings
Open Play Area

Site Description

Englehart Park is a modest-sized mini park, tucked behind a number of single family homes. The path leading to the park is narrow and the site is only made visible through the park sign. The park features a new playground that is in excellent condition, yet can benefit from shade and more comfortable seating areas. Overall, the site consists primarily of an open lawn area and lacks vegetation, with the exception of neighboring mature trees that define its perimeter. An old baseball/softball backstop is located on the north end of the property, but the size of the park is not large enough for it to be functional as for either of these sports.

Englehart Park received a score of 2.5/4. While this site features new equipment, its hidden location remains problematic and raises safety concerns.

Recommendations

- » Acquire an appraisal for sale
- » If maintained as a park, consider increasing safety measures at this location such as a more open, welcoming entrance and better visibility
- » Consider additional walkways/paths
- » Plant shade trees around the playground
- » Remove old playground equipment off the site
- » Remove obsolete baseball/softball backstop

C+

score = 2.5/4



New Play Structure
Excellent condition



Baseball/Softball Backstop
Fair condition



DOUGHBOY PLAZA

Location: Lincoln St. & Main St.

Size: 0.25 acres

MINI PARK

Features and Amenities

Monument
Memorial Plaques
Flag Poles

Site Description

Doughboy Plaza is a small and charming site, at the intersection of Lincoln and Main Streets. Originally designed in 1925, the monument was erected to memorialize Hobart residents who lost their lives in World War I. Since then, memorial plaques have been added in memory of those who lost their lives in World War II, Korean War, Vietnam War, and more. The site witnessed a major restoration in 2001, where the statue was refurbished, landscaping was restored, memorial paver bricks were added, and a new flag pole was installed. Overall, the site is in good condition, however the brick paving needs to be reset or replaced due to heaving which is created uneven surfaces. The plaza, exposed to adjacent vehicular traffic, can be better enclosed with additional strategically located landscaping.

Doughboy Plaza received a score of 3/4.

Recommendations

- » Increase maintenance and site management
- » Plant additional landscaping along the perimeter of the park to better buffer and screen from surrounding streets
- » Reset/replace brick paving
- » Cover the flag pole base with additional landscaping

B

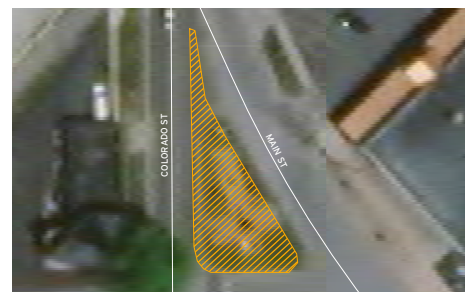
score = 3/4



Doughboy Monument
Great condition



Doughboy Plaza
Fair condition



BROOKVIEW PARK

Location: 1715 Minnesota St.

Size: 1.50 acres

Features and Amenities

Basketball Court
Picnic Shelter
Playground / Swings

NEIGHBORHOOD PARK

B

score = 3/4



Picnic Shelter

Good condition



Playground Equipment

Fair condition



Site Description

Brookview Park, one of Hobart's neighborhood parks, was developed as part of the 100 lot Brookview Terrace Residential Subdivision in the 1960s. This modest-sized site includes playground equipment that could use an upgrade. Additional elements, such as benches, picnic tables, a picnic shelter, and play equipment, including a swing set and climbing dome, are in fair condition. The Basketball court is in a good condition but could use new surfacing, refreshed paint striping, and new nets. The site could also benefit from additional circulation paths throughout the park. As a whole, the park would be greatly improved with additional landscaping, which would provide shade and buffer from adjacent properties.

Brookview Park received a score of 3/4. Overall, the site is in good condition, but it could benefit from general upgrades.

Recommendations

- » Address minor rust, cracks, and peeling paint issues on site features
- » Consider basketball court resurfacing and re-striping
- » Consider additional walkways and ADA paths, as well as seating pockets
- » Improve spatial definition between park and adjacent land with landscaping

BRICKIE BOWL

Location: 705 East 4th St.

Size: 1.50 acres

Features and Amenities

Football Field
Walking Track

NEIGHBORHOOD PARK

Site Description

Originally purchased from School City of Hobart, Brickie Bowl is a community staple that has left a strong impression with residents, and particularly with Brickies. This stadium is famous for a series of football games that caught national attention where the Brickies reached state finals a total of 11 times, winning in 1987, 1989, 1991, and 1993. This stadium is more than a field and highly contributes to the community's heritage, history, and culture.

Strategically located in the heart of Downtown Hobart, the site features a football field with a walking track and bleachers. Framing the site to the north is the Hobart Police Department, and the Duck Creek Wetland area to the east and south. Brickie Bowl features a country music concert annually, known as the Hometown Jams.

Brickie Bowl received a score of 3/4. This site has holds great potential to increase livability in Downtown Hobart.

Recommendations

- » Consider major renovations to the site that would increase usability and create a destination location in Downtown Hobart
- » Consider restoring old memorabilia, including the famous Brickie Bowl sign
- » Consider screening off the Hobart Police Department and adding a community open space such as a plaza
- » Improve access to the site from Downtown and consider parking needs for future events
- » Consider funding sources for major improvements

B

score = 3/4



Football Field and Bleachers
Good condition



Brickie Bowl Sign
Fair condition, consider renovating



EMILY SILICH PARK

Location: 615 W. 40th Pl.

Size: 1.81 acres

Features and Amenities

Basketball Court
Picnic Shelter
Playground
Swings

NEIGHBORHOOD PARK

D+

score = 1.5/4

Site Description

Emily Silich Park, named after a popular City Council member who was a strong supporter of expanding park facilities, is located near a high-density multifamily development and a YMCA facility. The site abuts the parking lot of the multifamily development and gives the impression that the space is privately managed. The park features two play structures, divided by a basketball court and a shelter. The playground equipment to the west is unsafe, dated, and in poor condition. The basketball court surface is in fair condition, but the backboards need to be replaced. The shelter appears to be structurally sound, a solid structure, however the roof is showing minor damage. The different amenities are connected through a recently added ADA concrete walk. The overall site landscaping consists primarily of undesirable tree species, such as cottonwoods, Silver Maples, ash trees, and Black Locusts, many of which are in poor condition.

Emily Silich Park received a score of 1.5/4. The site's location is generally unwelcoming.

Recommendations

- » Consider acquiring an appraisal for sale
- » Consider partnering with YMCA/SHLT for programming, events, or selling of property
- » Consider adding signage and wayfinding to better define the park perimeters and entrance point
- » Consider basketball court resurfacing and re-striping
- » Consider adding paths with seating pockets and more cohesively integrating park elements



Basketball Court
Fair condition



New Playground Equipment
Excellent condition



GLENWOOD PARK

Location: 4625 W. 15th Pl.

Size: 6.8 acres

Features and Amenities

Basketball Court
Playground / Swings

NEIGHBORHOOD PARK

C+

score = 2.5/4

Site Description

Glenwood Park, tucked behind two residential homes, is a large neighborhood park with 1 acre of active park use. Locating and accessing the park is a challenge to many, as the path leading to the park is narrow and sandwiched between two single family homes. The site features new play structures and a basketball court that is in fair condition. The rest of this site is heavily wooded and majorly located in a wetland area.

Glenwood park received a score of 2.5/4. The site's challenging location is the main reason the park scored low.

Recommendations

- » Consider placemaking initiatives to help bring attention to the park's entrance
- » Consider basketball court resurfacing and re-stripping
- » Consider adding seating pockets, including benches
- » Consider adding a boardwalk that extends into the wetland area



New Playground
Great condition



Basketball Court
Fair condition



HILLMAN HEIGHTS PARK

Location: 2500 N. Hansen Blvd.

Size: 3.41 acres

Features and Amenities

Basketball Court
Picnic Shelter
Playground / Swings

NEIGHBORHOOD PARK

B

score = 3/4

Site Description

Located in the Hillman Heights subdivision, Hillman Heights Park offers recreational amenities including two play structures, a swing set, a basketball court, and a picnic shelter with picnic tables. The playground to the east is older and has been recently renovated with painted metal posts. The picnic shelter overall is in poor condition and requires maintenance. Adjacent, yet spatially separated from the old play structure, is a swing set that is showing wear and is rusting. The playground to the west is brand new and features new safety features such as wood chip surfacing and defined edging. A basketball court separates the two play structures and is in fair condition. Features of the park are not well connected and do not cohesively integrate within the context as a whole are not well connected and are positioned against one another in an uncoordinated manner. Overall, Hillman Heights Park has a welcoming feel with mature trees and could potentially promote additional active and passive recreational features and amenities.

Hillman Heights park received a score of 3/4.

Recommendations

- » Repair/replace dated and rusted play equipment, including the swing set
- » Consider multi-generational passive recreation features
- » Consider basketball court resurfacing and re-stripping
- » Consider adding seating pockets, including benches
- » Consider better aligning future site amenities
- » Provide additional wayfinding and signage



Picnic Shelter
Fair condition



New Play Equipment
Excellent condition



HOBART CITY BALL PARK

Location: 400 E. 8th St.

Size: 5.33 acres

Features and Amenities

Baseball / Softball Diamond Playground / Swings
Bike Trail Concessions/bathroom
Picnic Shelter Building

This park is ADA accessible

NEIGHBORHOOD PARK

B+

score = 3.5/4



Baseball/Softball Field
Well maintained

Site Description

Utilized by local league players and the School City of Hobart, Hobart City Ball Park offers access to a multi-purpose baseball/softball field. The field is generally well maintained, however, there are no formal enclosed dugouts and it does not appear that there is an irrigation system, so the turf seems dry. The bleachers adjacent to the field have been moderately damaged and could be repaired or replaced. The park also provides active recreation to a wider user group through playground equipment, a swing set, a picnic shelter, and bike trail. Although the play equipment is in good condition, the area could benefit from updated amenities that enhance the overall experience, including a landscape buffer and renewed seating areas. The site is surrounded by mature oak trees, along with a variety of complementary tree species.

Hobart City Ball Park received a score of 3.5/4.

Recommendations

- » Consider implementing an irrigation system for the field
- » Repair/replace the bathroom and concession building. Consider a fresh coat of paint and overall maintenance
- » Consider a landscape buffer to screen the adjacent hardware store, and additional vegetation around the playground equipment
- » Consider memorial plaques for the older oak trees
- » Enhance/replace the picnic shelter to encourage community gatherings and accommodate larger groups
- » Update and include themed play structures/amenities

16» Consider a stand alone water fountain



Play Structure
Good condition, yet dated



HOBART COMMUNITY POOL

Location: 825 W. 10th St.

Size: 510 acres

Features and Amenities

Picnic Shelter
Pool (2)
Restrooms
Sand Volleyball

Splash pad
Skate Park
Parking

This park is ADA accessible

NEIGHBORHOOD PARK

A-

score = 3.9/4



Community Pool
Excellent condition



Skate Park
Good condition

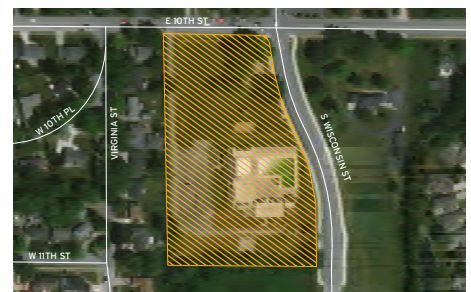
Site Description

Built in 1962, The Hobart Community Pool was owned and operated by a private association which sold memberships and rented pool facilities for special events. During the 2005 season, and after the pool was deeded to the City of Hobart, this facility attracted 6,000 visitors in the 46 days it was open. Attendance in recent years has doubled and is upward of 12,000, and continues to increase. In addition to aquatics, the park offers a skate park, play equipment and a swing set, and a picnic pavilion. Visitors are also able to participate in other activities on site, including skateboarding, as well as utilize the playground equipment, swing set, the picnic pavilion. The community pool facility is in excellent condition and carries the water theme onto the different facades through a wave mural. The splash pad has been under repair since 2020 and is currently out of service. The Parks Department is considering replacing the skate park with an expanded playground featuring modern play equipment.

Hobart Community Pool received a score of 3.9/4. This site provides recreational amenities to all community members.

Recommendations

- » Continue the water/sand theme into revived or renewed features and amenities
- » Consider funding sources to finalize the splash pad repair
- » Consider additional shade structures along the perimeter of the pool
- » Consider replacing the seating areas with modern furniture



JERRY PAVESE PARK

Location: 500 S. Lake Park Ave.

Size: 8 acres

Features and Amenities

Boat Launch	Playground / Swing
Boat Dock	Restrooms
Fishing	Scout Cabin
Open Play Area	Parking
Picnic Shelter	

NEIGHBORHOOD PARK

A-

score = 3.8/4



Scout Cabin

Rustic Architecture
Excellent condition



Play Equipment

Fair condition

Site Description

Located on the north shore of Lake George, Jerry Pavese Park is a linear, expansive park that offers a multitude of features and amenities. In more recent years, the Parks Department received a Land and Water Conservation Fund grant from the Indiana Department of Natural Resources to acquire approximately 6.4 acres of wooded land west of the existing portion of Jerry Pavese Park. The lake is tucked away behind the forested bluff and cannot be easily accessed, but the site offers filtered views in many locations. While the boy scout cabin is in excellent condition, the pavilion, play equipment, and bathroom facility are in fair to poor condition. This park provides a great natural setting for a variety of activities, but has the potential for additional passive and active recreation offerings, as well as better access to Lake George.

Jerry Pavese Park received a score of 3.8/4.

Recommendations

- » Repair/replace play equipment as needed
- » Selectively clear vegetation to open up views and integrate overlook points to Lake George
- » Provide a more consistent trail along the lake with formalized paths leading down to the trail from the park
- » Replace bathroom facility with a similar-sized structure
- » Consider a bridge to link the site to Pleak Park parcel
- » Repurpose tennis court slab with complementary amenities/features
- » Consider bluff stabilization and restoration
- » Provide wayfinding and signage throughout the site



LAKEFRONT PARK

Location: 400 E. 2nd St.

Size: 2 acres

Features and Amenities

Boat Dock
Fishing
Gazebo

NEIGHBORHOOD PARK

A

score = 4/4



Lake Gazebo

Recent addition - Excellent condition



Lakefront Trail

Features a multitude of amenities and connects to Festival Park

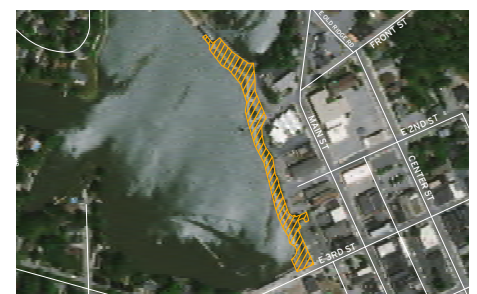
Site Description

Lakefront Park is located in downtown Hobart along Lake George and provides residents and visitors alike a variety of active and passive recreational opportunities, from walking and jogging to festivals and events. In 1996 Lakefront Park underwent major construction, leading to the addition of a fishing pier, clock tower, a walking path, landscaping, park benches, and decorative lighting. In 2019, more recent improvements resulted in decorative wall bank stabilization and a lake gazebo, among other improvements. Most importantly, Lakefront Park is walking distance from downtown Hobart, drawing activity and increasing sales for local businesses.

Lakefront Park received a score of 3.5/4. Lakefront Park has dramatically increased vibrancy in downtown Hobart.

Recommendations

- » Consider branding park amenities, furniture, and overall features with Hobart's brand and colors
- » Consider developing pop-up stores that allow local businesses to have waterfront access for short periods of time, through a rotational program (1 - 2 months duration)
- » Consider additional temporary and permanent placemaking activations, including public art, murals, and interactive art features
- » Consider lakefront character zones with varying themes, including a nature-based zone, kid's zone, and meditation zone, among others.
- » Continue overall maintenance and overall management



MCAFEE PARK

Location: 2632 Drexel Dr.

Size: 2.61 acres

Features and Amenities

Basketball Court
Open Play Area
Picnic Shelter
Playground / Swings

NEIGHBORHOOD PARK

C

score = 2/4



New Play Equipment
Excellent condition

Site Description

Hidden behind a large subdivision on Hobart's East side, McAfee Park features a playground, basketball court, swing set, picnic shelter, and a bike trail. While the brand new playground equipment is in excellent condition, it is not ADA accessible, due to the raised plastic curb. The rest of the site amenities are in poor condition and pose a safety concern. This includes a swing set with no fall zone and a leaning basketball hoop. The predominant feature of this park is the open play area, which can benefit from turf re-grading for a flatter surface. The entrance to the park is marked by a small rustic sign, situated between two residential parcels, which is easily overlooked. Formalizing this entrance with a larger sign and landscape/hardscape treatments create a more noticeable and welcoming gateway.

McAfee park received a score of 3.5/4. Significant open space can provide additional recreational activities.



Basketball Court
Poor condition and unsafe

Recommendations

- » Resurface and re-stripe the basketball court and install new hoops
- » Reduce turf area and provide additional active recreational amenities, including a small t-ball field
- » Formalize park entrance and overall signage/wayfinding
- » Consider additional shade trees and seating areas
- » Consider repairs/replacement of any damage or worn equipment and amenities
- » Consider replacing the chain link fence



PENNSY PARK

Location: 925 Lillian St.

Size: 2.2 acres

Features and Amenities

- 2 Pickleball Courts
- Picnic Shelter
- Playground / Swings
- Bike Trail
- Restrooms
- Open Play Area

NEIGHBORHOOD PARK

C+

score = 2.5/4



New Masonry Pavilion
Excellent condition



Play Structure
Good condition, yet dated

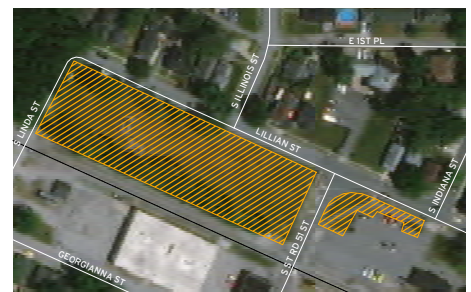
Site Description

Pennsy Park, located in a relatively dense neighborhood near downtown, is divided into two portions, east and west of Road 51. The east side of the park contains the old Pennsylvania Rail Road Station, originally built in 1914 which currently houses the Chamber of Commerce. This portion of the site also features a new masonry pavilion, utilized as a bathroom facility, with access to three picnic tables, along the Oak Savannah Trail. Additionally, the east side includes two tennis/pickleball courts that are in poor condition with cracked surfacing and faded striping. The west side of the park features a dated small play structure that is in fair condition, a swing set, and a small-sized baseball backstop. The open play field is uneven, patchy, and lacks an irrigation system. All amenities could benefit from overall repair or replacement to address signs of decay, including the few benches in the park. The two sides of the park can be better integrated by providing a more visible crossing for pedestrians.

Pennsy park received a score of 2.5/4.

Recommendations

- » Provide a clear pedestrian connection between the east and west sides of the park
- » Repair tennis/pickleball courts with new surfacing and re-striping
- » Consider integrating a community garden space in unused tennis court space
- » Consider an new ADA-compliant play equipment and replace dated and rusted play equipment (swing set)
- » Consider implementing a water/irrigation system
- » Consider a larger backstop and formalized baseball field



SOCCER & RUGBY FIELD

Location: 112 E. Old Ridge Rd.

Size: 8.26 acres

Features and Amenities

Rugby Field
Walking Track
Fishing
Kayak Launch
Parking

NEIGHBORHOOD PARK

B

score = 3/4



Goal Posts

Fair condition



River / Fishing Area

Can be more formalized

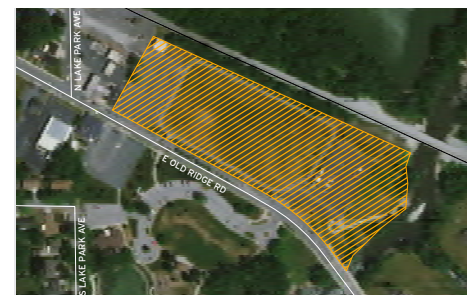
Site Description

Home to the Northwest Indiana Exiles Rugby Football Club for several years, the Soccer and Rugby Field is a simple, open turf area that is located close to the downtown area and sits across from Festival Park. The park is bordered by two parking lots. The western parking lot contains a storage building. The walking track asphalt could use resurfacing and overall maintenance. Overall, an irrigation system and regrading of the field would provide a better turf playing surface and the goal posts could be painted or replaced. The natural area to the east of the property features native grasses and wild flowers with an informal path that meanders down to the river, where visitors can fish or enjoy the setting. It is evident that the City is working on shoreline stabilization around the river.

Soccer and Rugby Field received a score of 3/4.

Recommendations

- » Consider repairs/replacement of any damage or worn equipment and amenities, particularly the goal posts
- » Consider implementing an irrigation system
- » Repair/resurface the parking lot pavement
- » Consider additional shade trees and seating areas for more comfortable viewing of sporting events
- » Consider adding seating areas near the river and formalizing the path leading to it



TED HANSEN PARK

Location: 3854 Maxwell St.

Size: 1.36 acres

Features and Amenities

Picnic Shelter
Playground / Swings
Parking

NEIGHBORHOOD PARK

C+

score = 2.5/4

Site Description

Ted Hansen Park is a tucked away, modest-sized park that offers recreation opportunities to the northwest side of Hobart. With a handicapped accessible playground, this site invites inclusivity, though the play structure itself is outdated. The site also features a picnic shelter that is in good condition, but not well connected to other amenities in the park. While there are plenty of benches throughout the site, placement should be more intentional. At the intersection of pathways, and in the center of the site, is a large trash bin. Which is the optimal location for vegetation or public art. The landscape is a combination of poor tree species, including a number of that have storm/wind damage. Overall there is little shade in the park and the landscape does not reinforce the site's geometry and structure. Ted Hansen Park could be upgraded by revitalizing the equipment, introducing park history signage, and better maintaining the landscape.

Ted Hansen park received a score of 3.5/4.

Recommendations

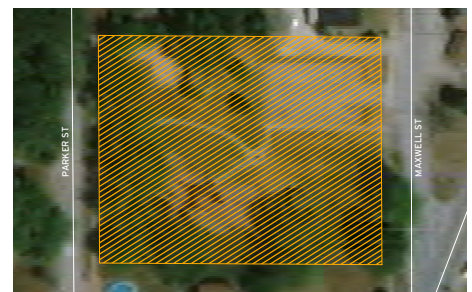
- » Formalize park pathway system
- » Consider additional shade trees and seating areas
- » Consider an ADA-compliant new play structure
- » Consider temporary and permanent placemaking activations, including public art elements in the center of the park



Picnic Shelter
Good condition



Play Equipment
Fair condition yet out dated



FESTIVAL PARK

Location: 111 E. Old Ridge Rd.

Size: 8.90 acres

Features and Amenities

Bandshell Pavilion
Boat Dock
Kayak Launch
Community Center
Fishing / Fishing Pier

Open Play Area
Playground / Swings
Restrooms
Parking

COMMUNITY PARK

B+

score = 3.5/4



Bandshell Pavilion
Fair condition

Site Description

Festival Park features a bandshell pavilion, boat dock, community center, open play area, picnic area, and a playground with swings. Lake George is the highlight of this park due to the plethora of water access available. There is opportunity for programming such as fishing, canoing, and other temporary activities. Various activities and special events are hosted on the site and serve as a driver for increased community interaction. The park is well maintained while providing a variety of large shade, evergreen, and ornamental trees. Overall, the park is in good condition, however, could benefit from more tables, chairs, and umbrellas for shade.

Festival park received a score of 3.5/4.

Recommendations

- » Consider additional shade trees and/or other shade structures
- » Consider themed and branded site furnishings, including tables and chairs
- » Consider revitalizing or constructing new bandshell pavilion
- » Consider replacing pavers that have shifted for a more level surface



Lake George
Programming opportunities



FRED ROSE 8TH ST. PARK

COMMUNITY PARK

Location: 200 W. 8th St.

Size: 26.07 acres (combined with Fred Rose Lakeshore Park)

Features and Amenities

2 Basketball Court Tennis Court
Picnic Shelter Futsal Court
Playgrounds / Swings

Site Description

Fred Rose 8th St. Park, located along the shores of Lake George, was previously connected to Fred Rose Lakeshore through a bridge. Due to age of the bridge and unsafe conditions, it was later removed. The space feels confined, lacks an overlook to the water, and has a sense of disconnection. The picnic shelter is in poor condition, with a deteriorating roof. The sites offer two basketball courts, an underutilized tennis court with cracked concrete surfaces, as well as a brand new play structure. To make the most of these areas, improvements to the parking lots, basketball courts, tennis court, and various surfaces are recommended. Adding elements such seating, paths, picnic tables, benches, and overlooks along the lake would greatly benefit the area.

Fred Rose 8th St./ Lakeshore Park received a score of 2.5/4.

Recommendations

- » Consider an ADA-compliant walkway to playground and shelter, additional ADA play equipment, and ADA-compliant fishing pier
- » Provide additional seating options
- » Consider installation of ADA-compliant pedestrian bridge to reconnect Lakeshore Park to Fred Rose 8th St. Park
- » Selectively clear vegetation to open views to the water, and provide better access and signage

C+

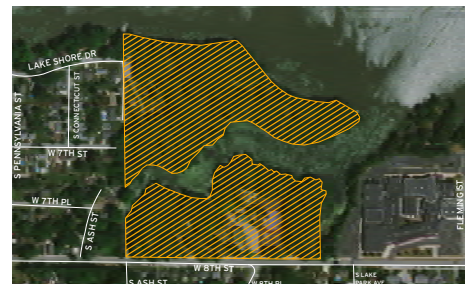
score = 2.5/4



New Play Structure
Excellent condition



Tennis Court
Poor condition



FRED ROSE LAKESHORE

COMMUNITY PARK

Location: 400 Lakeshore Dr.
Size: 26.07 acres (combined with Fred Rose 8th St. Park)

Features and Amenities

Picnic Shelter
Playgrounds / Swings
Fishing
Walking Trail

Site Description

Fred Rose Lakeshore, located along the shores of Lake George, was previously connected to Fred Rose 8th St. Park through a bridge. Due to age of the bridge and unsafe conditions, it was later removed. Amenities at this site are generally in good condition, including a play structure and benches, as well as a picnic shelter. This site is in close proximity to Lake George and is separated from the lake by a bluff. The side slopes to the lake have historic silt loam oak savanna, typical of the area before the European settlers arrived. Enhancing this connection to the lake would be a great opportunity to support existing passive programming, such as picknicking and recreational walking.

Fred Rose 8th Lakeshore Park received a score of 3.5/4.

Recommendations

- » Consider installation of ADA-compliant pedestrian bridge to reconnect Lakeshore Park to Fred Rose 8th St. Park
- » Selectively clear vegetation to open views to the water, and provide better access and signage

B

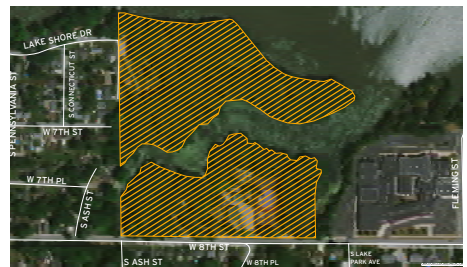
score = 3/4



Diamond Field
Good condition



Lake George



HILLMAN PARK

Location: 2557 W. Old Ridge Rd.

Size: 33.29 acres

Features and Amenities

2 Baseball / Softball Fields	2 Picnic Shelters
5 Soccer Fields	Restrooms
Basketball Court	Parking
Football Field	

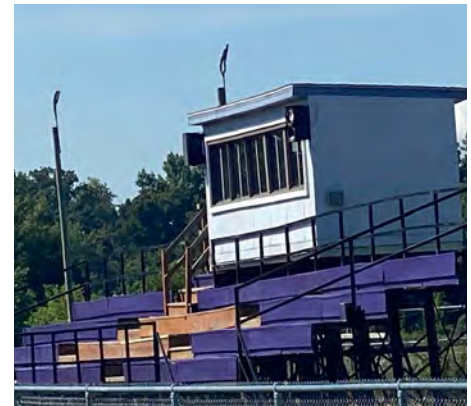
COMMUNITY PARK

B

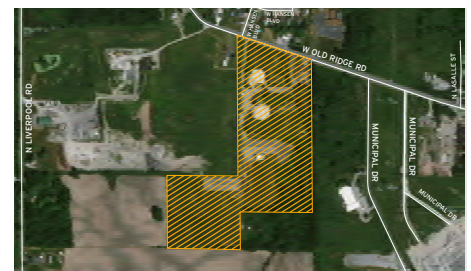
score = 3/4



Diamond Field
Good condition



Bleachers and Press Box
Fair condition



Site Description

At 33 acres and with a multitude of field options, Hillman Park is home to many sporting activities. The site includes soccer fields, basketball courts, youth football, baseball/ softball, and volleyball areas. There are five soccer fields, three of which are smaller in size, that are well maintained. By the soccer fields are two new shelters with picnic tables, a gravel parking lot, and a new concession/storage building. The youth football field is well kept with a large concessions storage facility that is in good condition. However, the bleachers and press box are in poor condition and could benefit from improvements or replacement. There are two lit baseball/softball fields that are in good condition, but they could benefit from improved dugouts, additional benches, and new bleachers. The concession building near the baseball/softball fields is in poor condition. Overall, the site features basketball and volleyball courts that are in poor condition, as well as a bathroom facility that needs substansive improvements.

Hillman park received a score of 3/4.

Recommendations

- » Repair/replace concession building, press box, bathroom facility, bleachers, and other amenities
- » Create one storage facility on site to replace and house all storage needed; provided fenced screening for any outdoor storage items
- » Provide dugouts on baseball/softball fields
- » Consider developing a circulation plan for the overall site and consider a more intentional landscape plan

VETERAN'S MEMORIAL PARK

Location: 5899 E. 73rd Ave.

Size: 19.74 acres

Features and Amenities

Open Play Area
Basketball Court
2 Picnic Shelters
Restrooms

Storage
2 Soccer Fields
Splash Pad
Parking

COMMUNITY PARK

B+

score = 3.5/4



Picnic Shelter
Good condition



Play Equipment
Fair condition

Site Description

Veteran's Memorial Park is a community park built in the 1990s, and features a Veterans Memorial that was added in 1996, marking the gateway to this site. Improvements to the park include a playground structure that was installed in 2007, followed by a sledding hill that was developed in 2014. The play structure is small but in fair to good condition. Considering the site's age, it continues to be in overall good condition. The site features two soccer fields and two picnic shelters that are in good condition. There are old wood benches in poor shape that could benefit from replacement. The access wood bridge from the parking is in poor condition and is recommended to be replaced. Near the playground and benches, the site features a large concrete pad with no clear use. The bathroom facility is in fair to poor condition and could use overall improvements. Although manged, the site could benefit from renewing the existing path, plaza, and picnic tables.

Veteran's Memorial park received a score of 3.5/4.

Recommendations

- » Repair/replace dated play equipment
- » Repair/replace cracked concrete path
- » Consider updating the bathroom facility
- » Provide additional features, including a dog park and other active recreational amenities
- » Consider replacing the wooden benches



ROBINSON LAKE PARK

COMMUNITY PARK

Location: 5240 S. Liverpool Rd.

Size: 32.68 acres

Features and Amenities

Beach	Restrooms
Open Play Area	Storage
2 Picnic Shelters	Parking
Playground / Swings	

B+

score = 3.5/4

Kelly to send

Site Description

Located on the West side of Hobart bordering I-65, Robinson Lake Park's main asset is the 17-acre lake. This feature allows for public use, including fishing, swimming, and other non-motorized activities. The park has two large shelters, many picnic tables, playground equipment, walking trails, and an old swing set. The walking trail around the lake has eroded and is difficult to traverse, which should be considered from a maintenance standpoint. Robinson Lake Park holds a great deal of potential due to its size and the presence of the water feature, which is not found in other parks. This site is used by a large number of Hobart residents during the summer and can be better programmed to attract more people.

Robinson Lake Park received a score of 3.5/4.

Recommendations

- » Provide overall maintenance and management
- » Address tripping hazards on all surfaces
- » Continue to implement erosion control measures
- » Consider additional amenities, including gazebo, overlook, and fishing dock
- » Consider formalized features and amenities that support programming and events, such as weddings, and birthday parties.



Robinson Lake



Picnic Shelter
Fair condition



OAK SAVANNAH TRAIL

Location: 4 North Hobart Rd.

Size: Add Address Here

Features and Amenities

Bike Trail
Fishing
Walking Track

WALKING / BIKING TRAIL

A

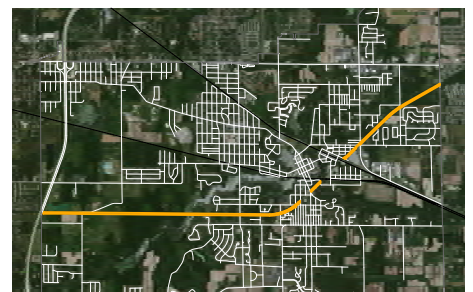
score = 4/4



Biking/Walking Trail
Excellent condition



View of Robinson Lake



Site Description

The Oak Savannah Trail connects the City of Hobart to Griffith in north Indiana, and passes through a multitude of natural area typologies, including prairie groves, forests, and two lakes. This trail is comprised of a 12-foot wide asphalt walking and biking surface, which links a number of green spaces, natural areas, and recreational opportunities within Hobart. Eight out of the 18 miles of trail are found within the Hobart City limits. Overall, this trail is popular for walking, biking, hiking, and running, as well as other passive recreation opportunities offered by the variety of natural areas surrounding the trail.

Oak Savannah trail received a score of 4/4.

Recommendations

- » Consider seating pockets and benches at key locations along the trail
- » Consider signage and wayfinding to guide users to downtown Hobart and nearby businesses
- » Consider educational signage and wayfinding
- » Continued maintenance and management of the trail

PAGE INTENTIONALLY LEFT BLANK

Park, Recreation, and Natural Area Assessment

Table 2: Sports Participation MPI in Hobart

Sport Participation	Number of Adults (Households)	Percentage Total	MPI
Aerobics	1,568	6.8%	81
Archery	651	2.8%	115
Baseball	579	2.5%	85
Basketball	1,474	6.4%	94
Bicycling (Mountain)	710	3.1%	81
Bicycling (Road)	2,330	10.1%	89
Boating (Power)	1,391	6.0%	119
Bowling	1,859	8.0%	99
Canoeing / Kayaking	2,134	9.2%	126
Fishing	3,394	14.7%	137
Football	653	2.8%	91
Frisbee	784	3.4%	93
Golf	1,717	7.4%	94
Hiking	3,224	13.9%	87
Horseback Riding	499	2.2%	104
Ice Skating	467	2.0%	86
Jogging / Running	2,260	9.8%	88
Pilates	634	2.7%	87
Ping Pong	775	3.3%	96
Rock Climbing	328	1.4%	80
Roller Skating	324	1.4%	90
Soccer	606	2.6%	67
Softball	421	1.8%	96
Swimming	3,544	15.3%	98
Tennis	642	2.8%	74
Volleyball	690	3.0%	113
Walking for Exercise	6,943	30.0%	96
Weight-lifting	2,606	11.3%	89
Yoga	2,192	9.5%	91
Zumba	590	2.5%	78

Table 3: Leisure & Social Activity MPI in Hobart

Leisure & Social Activity	Number of Adults (Households)	Percentage Total	MPI
Attended Sports Events	2,824	12.2%	96
Attended Baseball Game (College)	285	1.2%	76
Attended Football Game (College)	537	2.3%	85
Attended high school sports	709	3.1%	123
Attended adult education course	1,924	8.3%	84
Visited an aquarium	1,092	4.7%	88
Went to art gallery	1,110	4.8%	71
Attended auto show	1,237	5.3%	109
Played billiards/pool	1,131	4.9%	97
Played bingo	935	4.0%	98
Did birdwatching	1,697	7.3%	125
Attended dance performance	536	2.3%	74
Dined out	11,910	51.4%	102
Flew a drone	569	2.5%	92
Attended state/county fair	2,674	11.5%	113
Went to the movies	9,921	42.8%	89
Went to museum	2,324	10.0%	80
Attended classical music/opera performance	535	2.3%	69
Attended country music performance	1,313	5.7%	116
Attended rock music performance	1,700	7.3%	93
Went to live theater	1,954	8.4%	84
Visited a theme park	2,764	11.9%	83
Visited an indoor water park	557	2.4%	100
Went to a zoo	2,762	11.9%	105

SPORTS PARTICIPATION BY AGE GROUP

The National Sporting Goods Association (NSGA) and the Sports & Fitness Industry Association (SFIA) publish annual surveys on sports participation in the United States. Participation rates for selected activities are available by region, age group (age 7+), frequency, gender, and other variables. These rates have been applied to the local market area demographics to estimate the demand potential for Hobart’s Parks and Recreation facilities.

The following table shows participation by age group for sports/activities. The three age groups with the highest participation in percentage are highlighted.

Table 4: Sports Participation by Age Group

Sports	7-11	12-17	18-24	25-34	35-44	45-54	55-64	65-74	75+
Aerobic Exercising	2.5%	4.9%	8.4%	16.4%	18.6%	17.0%	14.7%	14.2%	3.5%
Baseball	24.1%	21.7%	12.0%	16.3%	15.1%	5.7%	3.3%	1.6%	0.0%
Basketball	14.1%	21.6%	17.6%	18.9%	15.8%	8.0%	3.8%	0.8%	0.0%
Bicycle Riding	13.4%	12.0%	7.7%	12.0%	12.0%	15.9%	16.8%	8.3%	1.8%
Boating (Motor)	8.6%	7.3%	9.4%	13.1%	15.4%	14.0%	17.4%	12.4%	2.4%
Bowling	7.6%	9.4%	14.1%	20.8%	14.9%	13.3%	12.3%	6.6%	1.0%
Canoeing	10.2%	12.3%	14.9%	17.8%	14.4%	12.7%	12.0%	5.8%	0.0%
Exercise Walking	2.3%	3.7%	6.1%	13.1%	12.9%	17.7%	20.4%	18.8%	4.9%
Fishing	7.7%	7.2%	7.1%	13.5%	12.6%	17.4%	20.4%	11.3%	2.8%
Football (Flag)	25.4%	22.4%	14.3%	18.9%	9.4%	7.0%	2.6%	0.0%	0.0%
Football (Tackle)	15.4%	39.6%	16.4%	13.5%	11.3%	3.0%	0.7%	0.0%	0.0%
Football (Touch)	19.4%	23.8%	13.2%	21.1%	12.1%	7.3%	2.5%	0.6%	0.0%
Golf	4.7%	4.9%	6.7%	14.7%	13.6%	15.4%	19.5%	15.5%	5.0%
Kayaking	6.4%	11.0%	12.1%	18.0%	15.3%	15.1%	13.7%	7.3%	1.1%
Lacrosse	17.7%	36.2%	16.5%	13.4%	6.4%	6.1%	1.8%	0.0%	0.0%
Martial Arts	19.2%	14.5%	13.6%	20.6%	16.0%	8.0%	6.3%	1.8%	0.0%
Mountain Biking	7.6%	13.1%	8.4%	22.2%	21.4%	15.5%	6.3%	5.4%	0.0%
Paintball	9.0%	30.1%	16.2%	22.6%	10.5%	7.4%	3.1%	1.1%	0.0%
Pickleball	6.8%	14.7%	12.8%	15.0%	12.5%	6.7%	11.7%	14.7%	5.0%
Pilates	0.9%	3.8%	10.5%	25.4%	18.2%	15.0%	14.4%	9.4%	2.4%
Running / Jogging	5.4%	10.7%	13.7%	24.6%	17.7%	14.1%	9.0%	4.0%	0.7%
Skateboarding	19.3%	30.0%	31.1%	18.7%	6.8%	2.9%	1.3%	0.0%	0.0%
Soccer	27.0%	24.4%	15.4%	19.3%	9.0%	3.1%	1.5%	0.3%	0.0%
Softball	16.0%	22.0%	8.6%	14.7%	13.9%	12.5%	9.2%	3.1%	0.0%
Swimming	13.1%	13.6%	8.7%	10.9%	12.1%	12.9%	14.5%	11.6%	2.6%
Table Tennis	8.2%	12.6%	17.2%	19.2%	12.9%	12.6%	8.9%	6.6%	1.9%

Target Shooting	3.7%	5.8%	7.0%	8.0%	6.5%	8.3%	7.6%	4.9%	2.4%
Tennis	7.3%	13.6%	12.3%	19.8%	15.2%	13.5%	9.7%	6.8%	1.8%
Volleyball	13.0%	25.6%	16.8%	20.5%	10.8%	8.1%	4.9%	0.3%	0.0%
Weightlifting	0.8%	5.7%	10.4%	19.8%	18.0%	18.4%	13.4%	11.0%	2.5%
Workout at a Studio	1.0%	5.2%	11.6%	20.8%	15.8%	15.6%	13.3%	13.2%	3.4%
Wrestling	18.3%	28.7%	17.6%	20.0%	8.1%	5.0%	2.2%	0.0%	0.0%
Yoga	3.1%	9.1%	10.1%	11.6%	12.3%	15.0%	15.0%	13.5%	5.5%

Pickleball and swimming have almost consistent participation rates throughout each age group.

The following table shows participation numbers for 2022 and 2027. By column, the first column lists the activity, the next set of columns represent the frequent, occasional, and infrequent participants for the years 2022 and 2027. The participants are then totaled for both years and the change, growth (decline) for every activity, noted.

Participation	Frequent		Occasional		Infrequent		Total			Annual Participation Days			
	2022	2027	2022	2027	2022	2027	2022	2027	Change	Median	Average	Total	
Activity/ Sport	2022	2027	2022	2027	2022	2027	2022	2027	Change	Days	Days	2022	2027
Aerobic Exercising	911	896	1,683	1,657	855	842	3,449	3,395	-54	50	82.26	283,718	279,262
Baseball	533	521	1,344	1,314	883	863	2,760	2,697	-63	15	23.99	66,219	64,707
Basketball	539	525	1,559	1,518	816	794	2,914	2,836	-77	20	27.02	78,727	76,641
Bicycle Riding	349	343	1,172	1,151	1,622	1,592	3,143	3,086	-57	23	47.4	148,963	146,261
Boating (Motor)	957	939	1,239	1,216	1,082	1,062	3,279	3,217	-62	8	14.23	46,661	45,781
Bowling	305	297	1,398	1,360	1,540	1,499	3,243	3,156	-87	5	10.13	32,848	31,970
Canoeing	403	392	831	809	1,913	1,863	3,147	3,065	-82	2	4.1	12,902	12,565
Exercise Walking	1,173	1,161	1,362	1,348	895	886	3,431	3,395	-35	60	94.81	325,286	321,921
Fishing	729	715	1,537	1,508	1,061	1,041	3,327	3,264	-63	8	12.41	41,291	40,503
Football (Flag)	448	438	1,587	1,551	646	632	2,680	2,620	-60	10	20.98	56,235	54,977

Park, Recreation, and Natural Area Assessment

Football (Touch)	168	164	1,059	1,034	1,575	1,537	2,802	2,735	-67	5	12.97	36,345	35,477
Golf	426	419	1,521	1,498	1,433	1,412	3,380	3,329	-51	12	20.09	67,898	66,881
Kayaking	983	959	1,104	1,077	1,176	1,147	3,262	3,184	-78	4	7.88	25,705	25,090
Lacrosse	94	93	1,336	1,317	1,044	1,029	2,473	2,439	-34	10	13.22	32,699	32,247
Martial Arts	321	312	1,888	1,832	761	739	2,971	2,883	-88	30	40.65	120,758	117,189
Mountain Biking	162	158	1,401	1,369	1,738	1,698	3,302	3,225	-77	3	8.6	28,396	27,734
Paintball	399	389	1,187	1,159	1,261	1,231	2,847	2,778	-68	5	8.15	23,200	22,644
Pickleball	144	142	1,914	1,892	1,008	996	3,066	3,030	-36	10	13.05	40,013	39,538
Pilates	1,306	1,270	860	836	1,345	1,307	3,511	3,413	-98	10	41.44	145,498	141,441
Running/ Jogging	663	643	1,477	1,434	1,157	1,123	3,297	3,201	-96	40	68.39	225,475	218,894
Skate-boarding	586	572	788	769	1,402	1,368	2,775	2,709	-67	6	14.82	41,133	40,146
Soccer	472	461	1,320	1,289	801	783	2,594	2,533	-61	20	23.31	60,458	59,035
Softball	525	514	1,418	1,389	1,024	1,003	2,967	2,907	-61	12	20.14	59,762	58,538
Swimming	228	225	1,027	1,014	1,820	1,797	3,075	3,036	-38	20	37.16	114,255	112,824
Table Tennis	484	474	1,657	1,622	962	942	3,104	3,038	-66	5	9.49	29,455	28,830
Target Shooting	470	462	655	644	611	601	1,735	1,707	-28	10	18.26	31,687	31,179
Tennis	517	505	2,257	2,209	414	406	3,188	3,120	-68	10	16.55	52,768	51,635
Volleyball	1,279	1,245	952	927	611	595	2,842	2,768	-74	15	23.44	66,611	64,875
Weight-lifting	980	961	1,773	1,738	710	696	3,463	3,394	-68	80	86.96	301,102	295,158
Work Out	1,088	1,068	1,494	1,466	825	810	3,407	3,345	-63	60	89.62	305,346	299,738
Wrestling	385	376	1,011	988	1,258	1,229	2,654	2,592	-62	10	15.49	41,110	40,151
Yoga	858	850	1,335	1,322	477	472	2,670	2,644	-26	15	32.26	86,143	85,305



it's **HOBART'S** *time*
2040 COMPREHENSIVE PLAN