



**COMPREHENSIVE PLAN  
MONUMENT, CO**

# **MONUMENT CONVERSATIONS**

March 5, 2025

**THE  
LAKOTA  
GROUP.**

SB Friedman  
V3 Engineering  
Rollins LLC  
Radian

# Monument Conversations

## 1. Intro Presentation

- » Project Overview
- » Project Timeline
- » Community Engagement

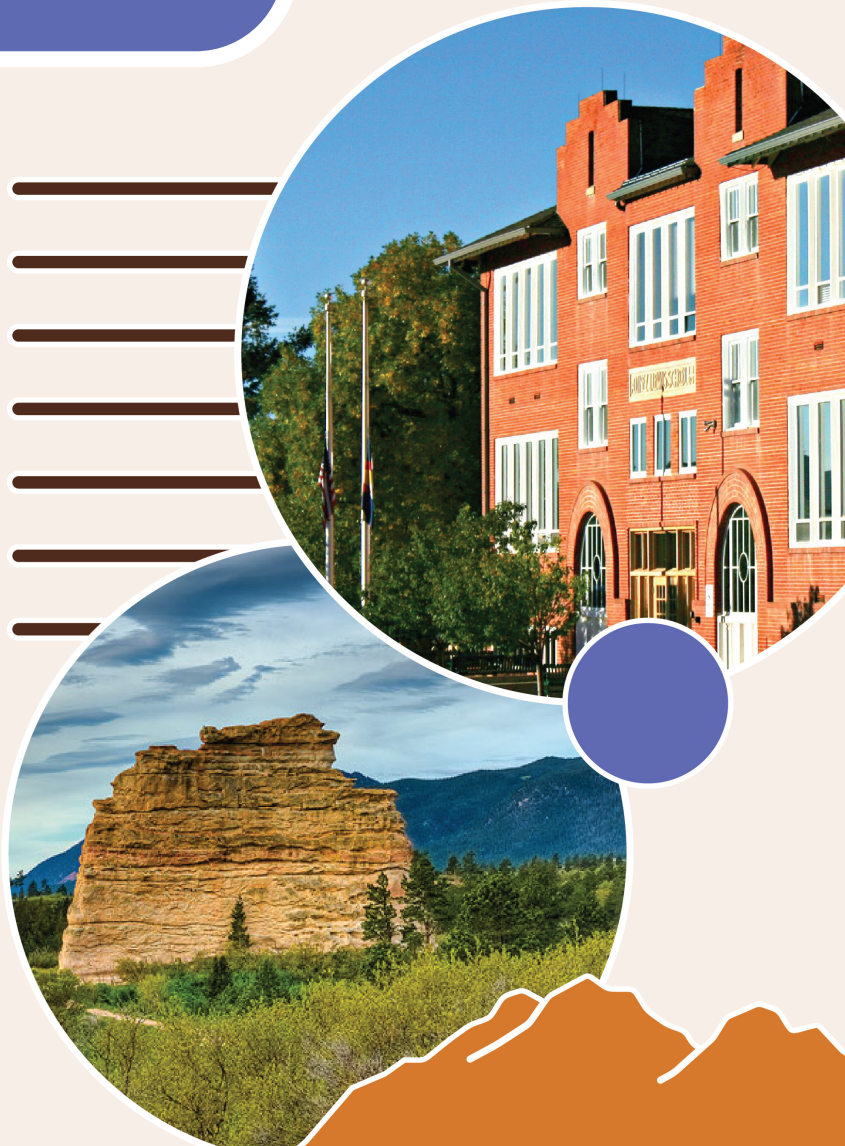
## 2. Round Table Discussions

## 3. Group Debrief



# What is a Comp Plan?

- **Strategic Roadmap:** Outlines long-term vision and growth strategy for a community.
- **Guidance for Development:** Informs Town decisions on land use and zoning.
- **Community Vision:** Captures public input, values, and goals.
- **Policy and Direction:** Sets policies and direction, not specific development plans.
- **Evolving:** Flexible to evolve with the community's changing needs.



# Project Phases



## PHASE 1

### **Engage & Assess.**

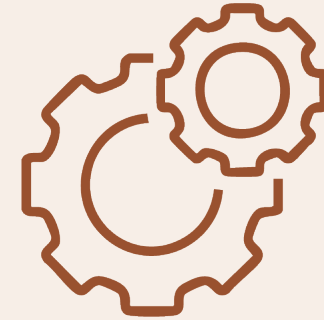
Build a solid foundation of knowledge based on planning analyses and robust community engagement.



## PHASE 2

### **Envision.**

Test ideas and define a unified community driven vision that crosses multiple planning principles and themes.



## PHASE 3

### **Plan & Implement.**

Develop a framework of strategies to achieve the unified vision. Define a roadmap for implementation.



# Guided by Community, Inspired by Possibility

A truly comprehensive plan is built on the voices of the community. We are here for **ENGAGEMENT WEEK** to learn about Monument's past, present, and future. Community participation transforms this plan from a document into a shared vision.

# Engagement Week!

Pop-Ups  
Focus Groups  
Conversations  
Downtown Event  
Town Tour  
& More



# & More!

TRADITIONAL ENGAGEMENT



INCENTIVIZED ENGAGEMENT



NEXT LEVEL MARKETING



POP-UP WORKSHOPS



INTERACTIVE ENGAGEMENT



# Round Table Discussions

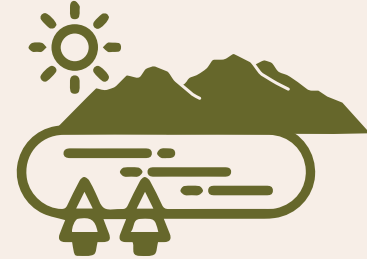




HOUSING &  
NEIGHBORHOODS



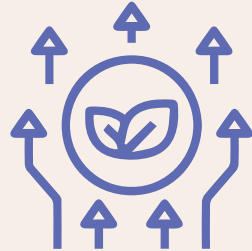
ECONOMIC  
VITALITY



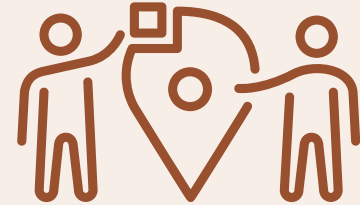
PARKS & OPEN  
SPACE



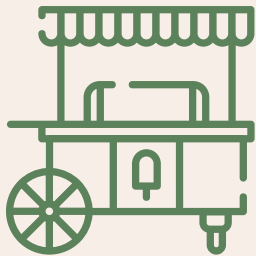
THE DOWNTOWN



SUSTAINABILITY



IDENTITY &  
PLACEMAKING



COMMUNITY EVENTS  
& PROGRAMMING



SAFETY, WELLNESS,  
& CONNECTIVITY

& More



# Housing & Neighborhoods

---

1. What initially attracted you to choose Monument as your home? What keeps you here?
2. How do current housing options in Monument align with your personal and community needs? What areas could improve?
3. What are the main housing challenges facing Monument today?
4. How would you describe or identify Monument's different neighborhoods?

# Economic Vitality

---

1. What types of retail stores, services, or businesses do you feel are currently missing in Monument? What do you leave town to buy or do? What would you like to see more of in our community?
2. Where do you primarily go for shopping, dining, and entertainment? What brings you there?
3. What actions can Monument take to create a more supportive environment for local businesses and entrepreneurs?



# Parks & Open Space

---

1. How do Monument's parks, open spaces and recreational facilities promote health & wellness? What additional amenities do you want to see?
2. How accessible are the parks and recreational facilities to you? What could be improved?
3. How can Monument improve the balance between recreation and conservation in open space areas?





# The Downtown

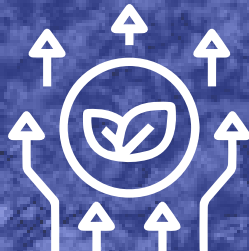
---

1. How often do you visit downtown Monument, and what typically brings you there?
2. What kind of changes or improvements would you love to see in downtown Monument?
3. Are there any businesses, services, or amenities that you believe are currently missing and would enhance the downtown experience?

# Sustainability

---

1. What conservation efforts should the town prioritize? (e.g., native landscaping, water conservation, wildlife corridors)
2. What type of sustainability initiatives should Monument focus on to enhance quality of life?
3. What are the biggest environmental concerns facing Monument today?





# Safety, Wellness, & Connectivity

---

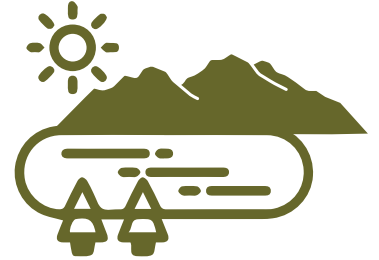
1. Are there specific areas where safety improvements (e.g., better lighting, crosswalks, traffic calming) are needed?
2. Are there adequate resources to support the wellness of all residents, from children to seniors?
3. How easy is it to walk or bike in Monument? What improvements would you like to see?

# Pick Your Topic!

(40-60 min)



HOUSING &  
NEIGHBORHOODS



PARKS & OPEN  
SPACE



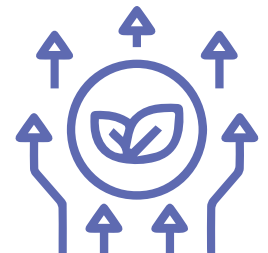
DOWNTOWN  
MONUMENT



ECONOMIC  
VITALITY

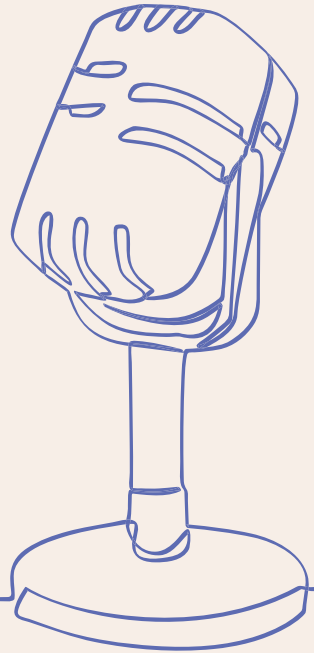


SAFETY, WELLNESS,  
& CONNECTIVITY



SUSTAINABILITY





# Group Debrief

(15 min)



[MONUMENT2040.COM](https://MONUMENT2040.COM)